

2017 Supervisory Certificate Program

Looking for an opportunity to hone your supervisory skills?

Salt Lake County's Supervisory Certificate Program is designed to give you the skills to lead high performing teams. If you are a current supervisor or are interested in developing supervisory skills this is a great professional development opportunity.

Program Requirements

Eleven Core Courses

Management Essentials Series

- County Government 101
- Building the County Workforce
- Maximizing Individual Performance
- Workplace Expectations & Accountability
- Employee Relations

Supervisory Skills

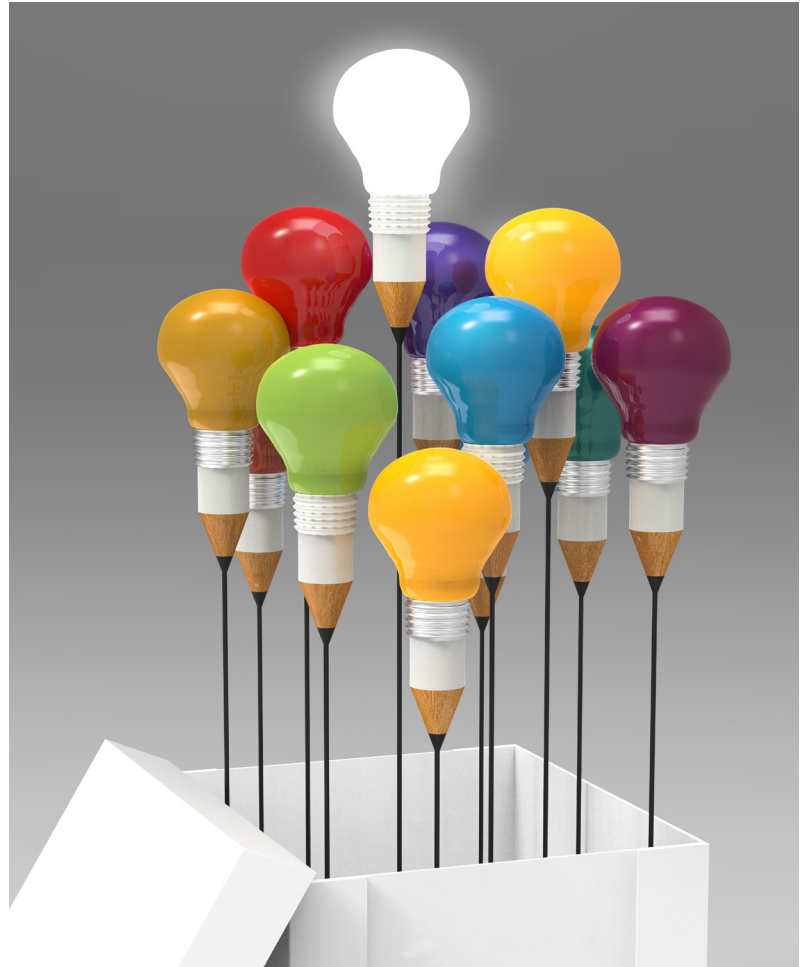
- The Role of a Supervisor
- Coaching Essentials
- Dealing with Difficult Conversations
- Managing Accountability
- Emotional Intelligence

Three Electives of Your Choice

Electives must be at least 4 hours long and relevant to your role as a supervisor/leader

Goal Oriented Action Plan

Final Skills Assessment



Apply Now

Submit an application with your Supervisor's signature to Employees' University by Jan 4, 2017. You will be notified of your admission status by January 25, 2017.

If accepted you will need to attend a mandatory 1.5 hour Orientation, February 2, 2017 starting at 8:30 a.m. or 1:00 pm

Contact Mary Van Buren at **385-468-0578** or by email mvanburen@slco.org for more information.



EMPLOYEES'
UNIVERSITY