

R 1W R 1E

36 31

S. 89° 54' 41" W.
2645.88'

1

2648.78'

N 0° 06' 04" W

Main Street

State Street

300 East Street

500 East Street

700 East Street

4500 South Street

2644.00'

N 0° 05' 22" W

1

S 89° 51' 54" E

12

R 1W R 1E

SUBDIVISION SALT LAKE COUNTY RECORDER'S
FILE NO.
MURRAY HILL GARDENS PLAT A 4-4
MURRAY HILL GARDENS PLAT B 2-78
MURRAY MEADOWS PLAT A 0-49
MURRAY MEADOWS PLAT B 0-50
MURRAY MEADOWS PLAT B AMD Y-20
COTTONWOOD CREEK NO. 1 N-16
COTTONWOOD CREEK NO. 2 Y-13

- ★ -Tie Sheet Is Available
- △ -Designates S.L. County Surveyor's File No.
- -Designates S.L. County Recorder's File No.

REVISIONS			
NO.	DATE	DESCRIPTION OF REVISION	INITIAL
1	6-1-94	HaiSta Estates	LJP
2	4-28-95	Wagstaff Acres Plat A	LJP
3	4-28-95	Added Notice	LJP
4	9-22-95	Huntington Sub.	ALM
5	11-2-95	Change S.L. County Surveyor, Vaughn E. Butler	ALM
6	11-2-95	Standardize Layer Colors	ALM
7	11-10-95	Cottage Cove Condominiums	ALM
8	6-25-96	Cottage Cove 2 Condominiums	PJL
9	6-9-97	Cline Acres Plat A	BJB
10	7-14-97	Bamberger Add. Am'd	PSB
11	9-30-98	Murray Meadows Condominium	PSB
12	8-25-99	Swindon Downs Subdivision	PSB
13	9-16-99	Gordon Land & 300 East Street Dedication	PSB
14	7-19-01	Milroca Park Subdivision Am'd	PSB
15	11-1-02	W.E. Bowers Subdivision	PSB
16	11-5-02	Ray Subdivision	PSB
17	8-11-03	Hollyhocks Subdivision Am'd	PSB
18	6-30-04	Willow Wood Professional Plaza	PSB
19	11-18-05	Gartin Subdivision	PSB
20	8-11-08	Change S.L. County Surveyor, Reid J. Demman	MSK

SEC. 06

T2S-R1E

AREA REFERENCE PLAT

PREPARED BY THE OFFICE OF
THE SALT LAKE COUNTY SURVEYOR

COMPILED BY

REID J. DEMMAN

SALT LAKE COUNTY SURVEYOR

SALT LAKE COUNTY
GEOGRAPHIC INFORMATION SYSTEM
©1992



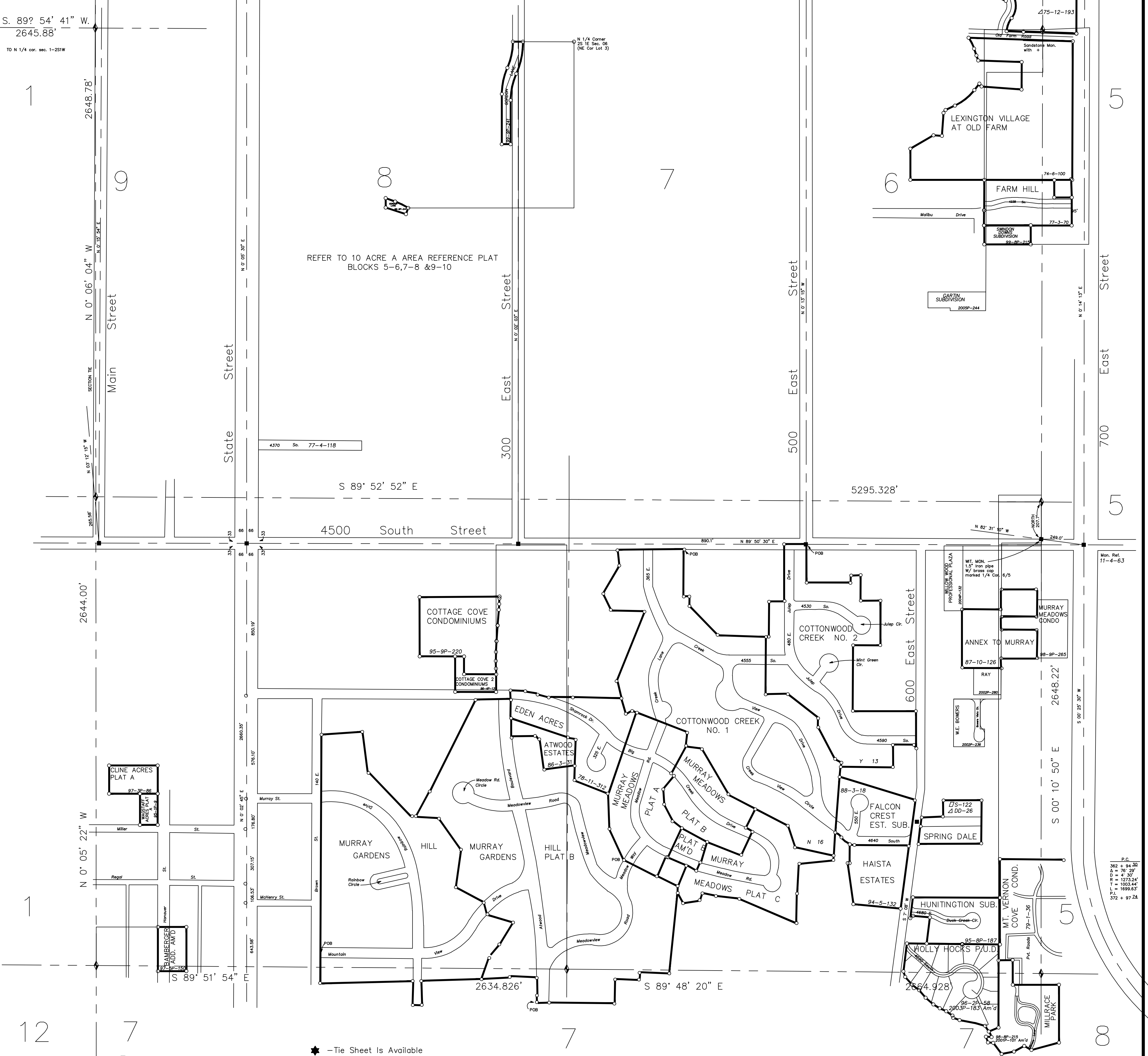
SCALE 1" = 300'

NOTICE
THE VALUES SHOWN HEREON REFERENCE THIS PLAT ONLY. ADJACENT AREA REFERENCE PLATS MAY SHOW DIFFERENT VALUES FOR IDENTICAL LINES. A.R.P. VALUES HAVE BEEN GATHERED OVER A NUMBER OF YEARS, USING A VARIETY OF EQUIPMENT WITH VARYING DEGREES OF ACCURACY. ALL INFORMATION SHOWN IS FOR REFERENCE ONLY AND SHOULD BE FIELD VERIFIED. COPIES OF FIELD TRAVERSES ARE AVAILABLE FOR MOST SECTIONS. STATE PLANE COORDINATES ARE ALSO AVAILABLE FOR SOME SECTIONS. PLEASE CHECK WITH STAFF.

06-T2S-R1E

06-T2S-R1E

Date Converted - 09/24/92



REFER TO 10 ACRE AREA REFERENCE PLAT
BLOCKS 5-6,7-8 &9-10

4370 So. 77-4-118

S 89° 52' 52" E

5295.328'

N 82° 31' 50" W

249.0'

6/5

88-9P-285

87-10-126

RAY

200P-287

W.E. BOWERS

200P-287

200P-287

200P-287

200P-287

200P-287

200P-287

200P-287

200P-287

200P-287

200P-287

200P-287

200P-287

200P-287

200P-287

200P-287

200P-287

200P-287

200P-287

200P-287

200P-287

200P-287

200P-287

200P-287

200P-287