

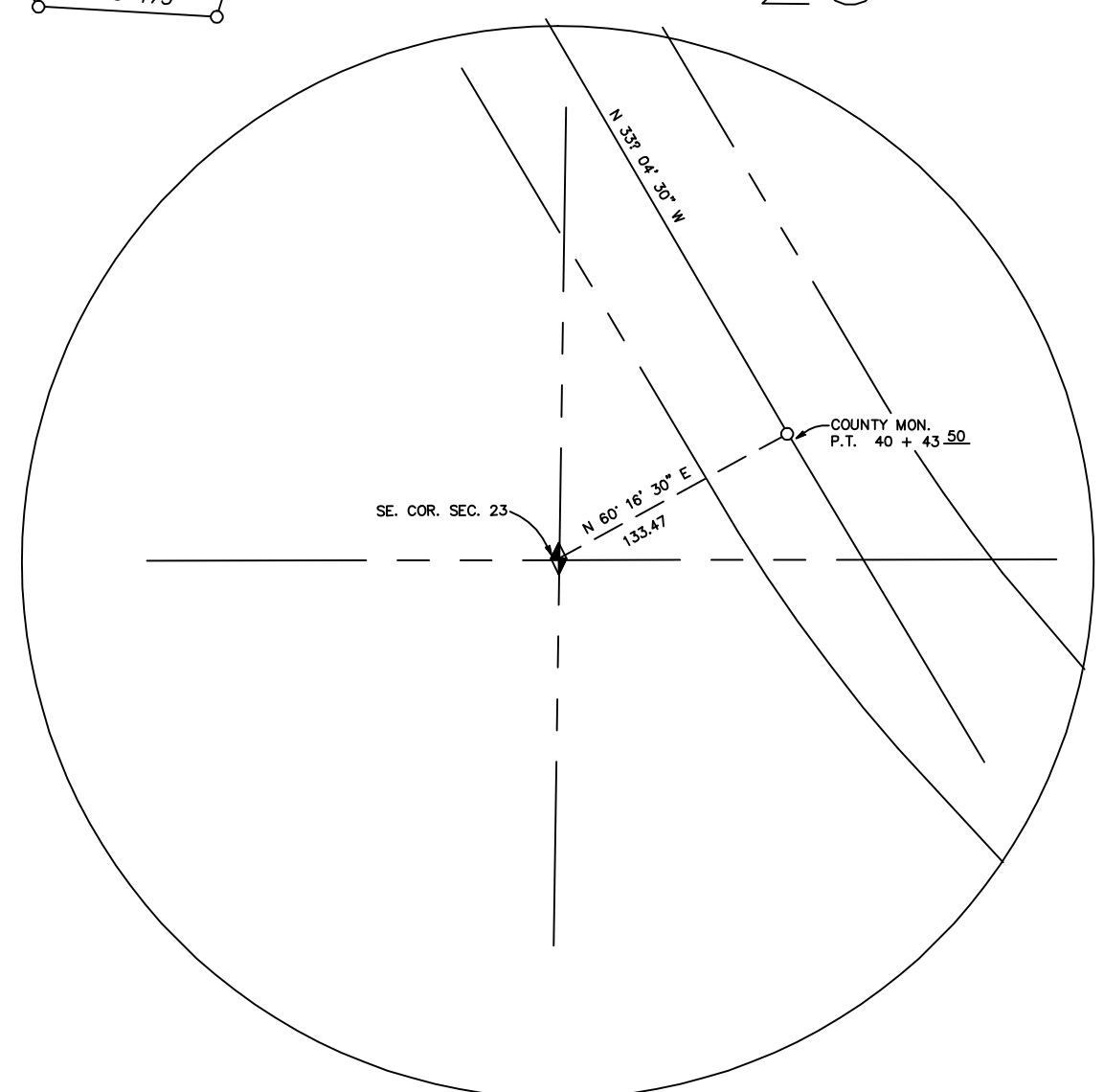
- ★ - Tie Sheet Is Available
- △ - Designates S.L. County Surveyor's File No.
- - Designates S.L. County Recorder's File No.

REVISIONS			
NO.	DATE	DESCRIPTION OF REVISION	INITIAL
1	9-23-93	Update 1992-93 Subdivisions	LJP
2	1-05-94	Old Mill Lane Sub.	LJP
3	3-29-94	Hollow Mill Drive Amend.	LJP
4	7-7-94	Mill Hollow Cove Sub.	LJP
5	3-13-95	Rubber Sheeted	SW
6	5-8-95	Overlook At Old Mill Sub.	LJP
7	5-8-95	Added Notice	LJP
8	6-9-96	Added Monuments on 3000 East	LJP
9	7-29-97	Revised dist. on 3000 E. (997.41' to 977.41')	LJP
10	7-31-97	Change S.L. Co. Surveyor-Vaughn E. Butler	PSB
11	7-31-97	Standardize Layer Colors	PSB
12	8-29-97	Canyon Ranch Condominiums	PSB
13	2-11-98	Mountain Cove Condominiums	MDS
14	8-8-98	Cottonwood Corner	MDS
15	11-30-99	Millpointe Office Condominiums	PSB
16	9-20-00	Canyon Ridge Condominium	PSB
17	10-18-00	Canyon Pines Condominium	PSB
18	12-27-01	Old Mill Corporate Center II Condominiums	PSB
19	3-27-02	Canyon Pines Condominium Amended	PSB
20	7-30-02	Millpointe Office Condominium Amended	PSB
21	11-5-02	Alpine Chateaux Condominium	PSB
22	11-19-07	Change S.L. Co. Surveyor-Reid J. Demman	MSK

SEC. 23 T2S-R1E AREA REFERENCE PLAT

PREPARED BY THE OFFICE OF
THE SALT LAKE COUNTY SURVEYOR

REID J. DEMMAN
SALT LAKE COUNTY SURVEYOR



NOTICE

THE VALUES SHOWN HEREON REFERENCE THIS PLAT ONLY. ADJACENT AREA REFERENCE PLATS MAY SHOW DIFFERENT VALUES FOR IDENTICAL LINES. A.R.P. VALUES HAVE BEEN GATHERED OVER A NUMBER OF YEARS, USING A VARIETY OF EQUIPMENT WITH VARYING DEGREES OF ACCURACY. ALL INFORMATION SHOWN IS FOR REFERENCE ONLY AND SHOULD BE FIELD VERIFIED. COPIES OF FIELD TRAVERSES ARE AVAILABLE FOR MOST SECTIONS. STATE PLANE COORDINATES ARE ALSO AVAILABLE FOR SOME SECTIONS. PLEASE CHECK WITH STAFF.



SCALE 1" = 300'