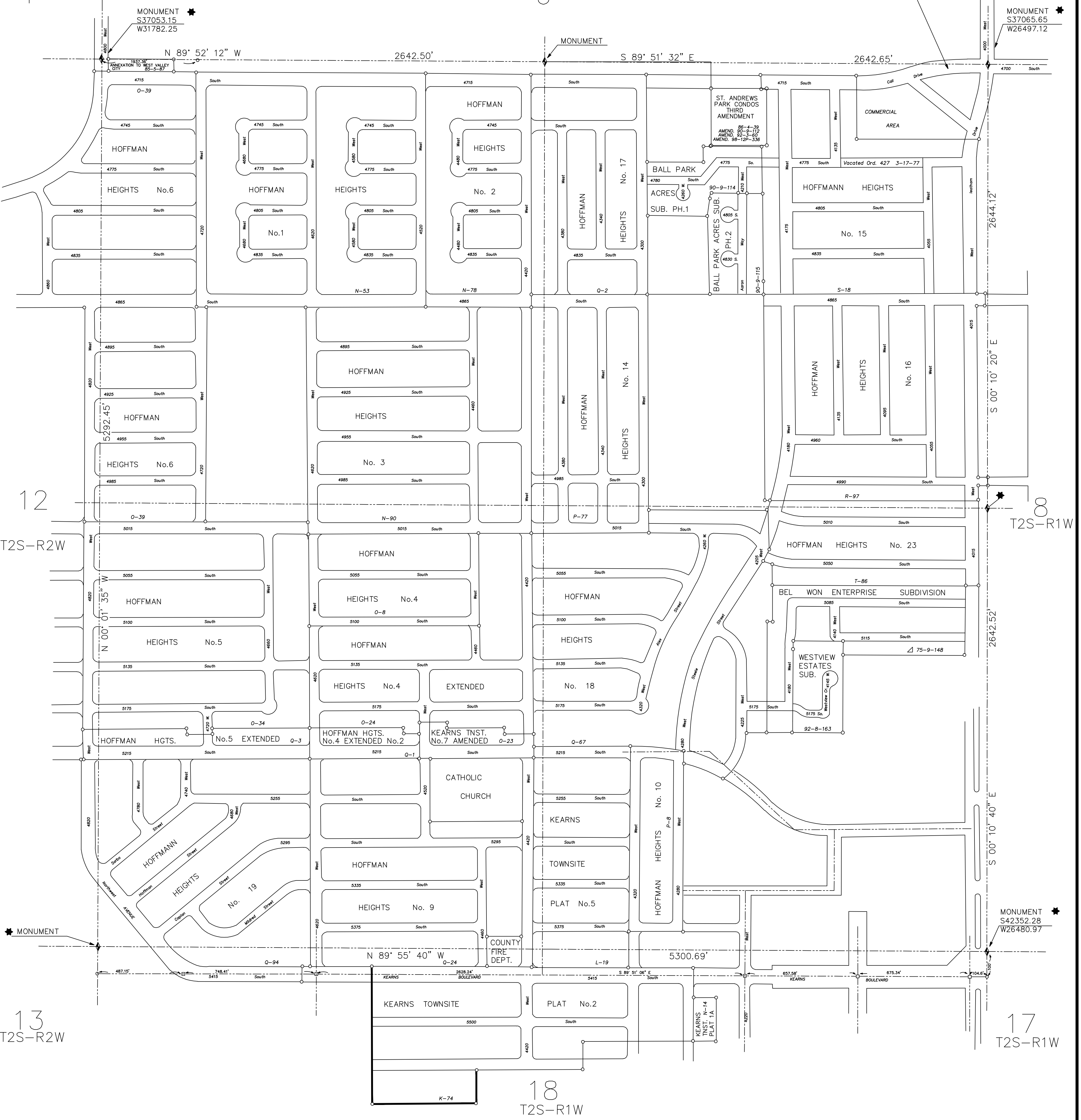


T2S-R2W
1

T2S-R1W
6

NOTE: See dedication West #2
Salt Lake County Surveyor's Office
and/or Book "S" page 40
County Recorder's Office.

T2S-R1W
5



SEC. 07
T2S-R1W
AREA REFERENCE PLAT

- ★ - Tie Sheet Is Available
- Δ - Designates S.L. County Surveyor's File No.
- - Designates S.L. County Recorder's File No.

REVISIONS			
NO.	DATE	DESCRIPTION OF REVISION	INITIAL
1	9-9-93	Update 1992 Subs. and Amendments	LJP
2	2-16-95	Rubber Sheeted	SW
3	12-2-98	St. Andrews Park Condominiums Third Amend.	PPM
4	11-19-07	Change Surveyor to Reid J. Demman	MSK

PREPARED BY THE OFFICE OF
THE SALT LAKE COUNTY SURVEYOR

REID J. DEMMAN
SALT LAKE COUNTY SURVEYOR



SCALE 1" = 300'

Date Converted - 07/17/92

07-T2S-R1W

SALT LAKE COUNTY
GEOGRAPHIC INFORMATION SYSTEM
© 1992

07-T2S-R1W