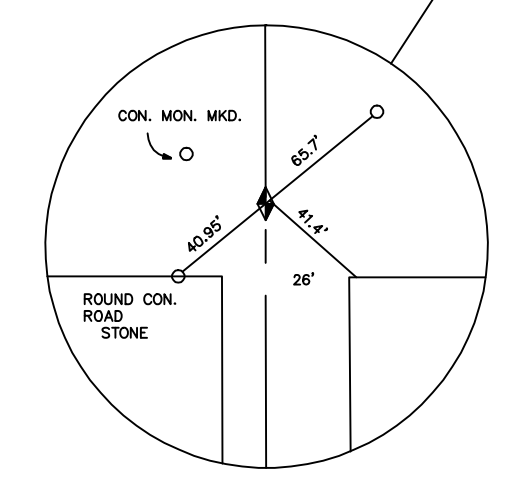


SEC. 16
T2S-R1W
AREA REFERENCE PLAT



NOTICE
THE VALUES SHOWN HEREON REFERENCE THIS PLAT ONLY. ADJACENT AREA REFERENCE PLATS MAY SHOW DIFFERENT VALUES FOR IDENTICAL LINES. A.R.P. VALUES HAVE BEEN GATHERED OVER A NUMBER OF YEARS, USING A VARIETY OF EQUIPMENT WITH VARYING DEGREES OF ACCURACY. ALL INFORMATION SHOWN IS FOR REFERENCE ONLY AND SHOULD BE FIELD VERIFIED. COPIES OF FIELD TRAVERSES ARE AVAILABLE FOR MOST SECTIONS. STATE PLANE COORDINATES ARE ALSO AVAILABLE FOR SOME SECTIONS. PLEASE CHECK WITH STAFF.

- ★ - Tie Sheet Is Available
- △ - Designates S.L. County Surveyor's File No.
- ◇ - Designates S.L. County Recorder's File No.

REVISIONS			
NO.	DATE	DESCRIPTION OF REVISION	INITIAL
1	9-20-93	Update 1993 Subdivisions	LJP
2	2-17-95	Rubber Sheeted	SW
3	10-12-95	Added Notice	ALM
4	10-12-95	Change S.L. County Surveyor, Vaughn E. Butler	ALM
5	10-12-95	Osequera Sub.	ALM
6	10-15-98	Labrum Cove Subdivision	PPM
7	10-19-01	Hale's Island	PSB
8	3-26-03	Bryan Wright Subdivision	PSB
9	11-19-07	Change S.L. County Surveyor, Reid J. Demman	MSK

PREPARED BY THE OFFICE OF
THE SALT LAKE COUNTY SURVEYOR



SCALE 1" = 300'

REID J. DEMMAN
SALT LAKE COUNTY SURVEYOR

Date Converted - 07/23/92

SALT LAKE COUNTY
GEOGRAPHIC INFORMATION SYSTEM
©1992

16-T2S-R1W

16-T2S-R1W