

- ★ - Tie Sheet Is Available
- △ - Designates S.L. County Surveyor's File No.
- - Designates S.L. County Recorder's File No.

NOTICE

THE VALUES SHOWN HEREON REFERENCE THIS PLAT ONLY. ADJACENT AREA REFERENCE PLATS MAY SHOW DIFFERENT VALUES FOR IDENTICAL LINES. A.R.P. VALUES HAVE BEEN GATHERED OVER A NUMBER OF YEARS, USING A VARIETY OF EQUIPMENT WITH VARYING DEGREES OF ACCURACY. ALL INFORMATION SHOWN IS FOR REFERENCE ONLY AND SHOULD BE FIELD VERIFIED. COPIES OF FIELD TRAVERSES ARE AVAILABLE FOR MOST SECTIONS. STATE PLANE COORDINATES ARE ALSO AVAILABLE FOR SOME SECTIONS. PLEASE CHECK WITH STAFF.

REVISIONS			
NO.	DATE	DESCRIPTION OF REVISION	INITIAL
1	10-5-93	Update 1992 Subdivisions and Annexations	LJP
2	3-21-94	Annexation to Sandy City 94-2-38	LJP
3	7-26-94	Silver Sage No. 9B Subdivision	LJP
4	12-9-94	Annexation to Sandy City 94-11-340	LJP
5	1-25-95	Annexation to Sandy City 94-12P-389	LJP
6	3-17-95	Rubber Sheeted	SW
7	5-1-95	Sandy Point P.U.D.	LJP
8	5-1-95	Added Notice	LJP
9	5-11-95	Silver Sage No. 2 Amended	LJP
10	9-26-95	Dimple Dell Annex to Sandy City	ALM
11	3-29-96	Sandy Point No. 2 Subdivision	BJB
12	4-8-99	Change S.L. County Surveyor-Vaughn E. Butler	PSB
13	4-8-99	Standardize Layer Colors	PSB
14	4-8-99	Waterworks No.1 Subdivision	PSB
15	2-16-00	Silver Sage No. 10 Subdivision	PSB
16	7-11-00	Silver Sage Business Park	PSB
17	9-26-02	Prestbury Place Subdivision	PSB
18	12-27-05	Amberley Grove Subdivision	PSB
19	8-11-08	Change S.L. County Surveyor-Reid J. Demman	MSK

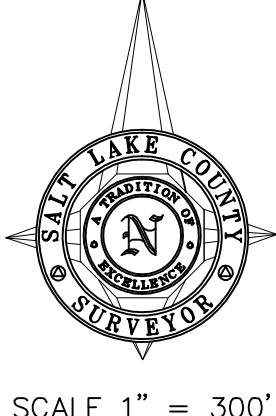
SEC. 17
T3S-R1E

AREA REFERENCE PLAT

PREPARED BY THE OFFICE OF
THE SALT LAKE COUNTY SURVEYOR

COMPILED BY
REID J. DEMMAN
SALT LAKE COUNTY SURVEYOR

SALT LAKE COUNTY
GEOGRAPHIC INFORMATION SYSTEM
©1992



SCALE 1" = 300'