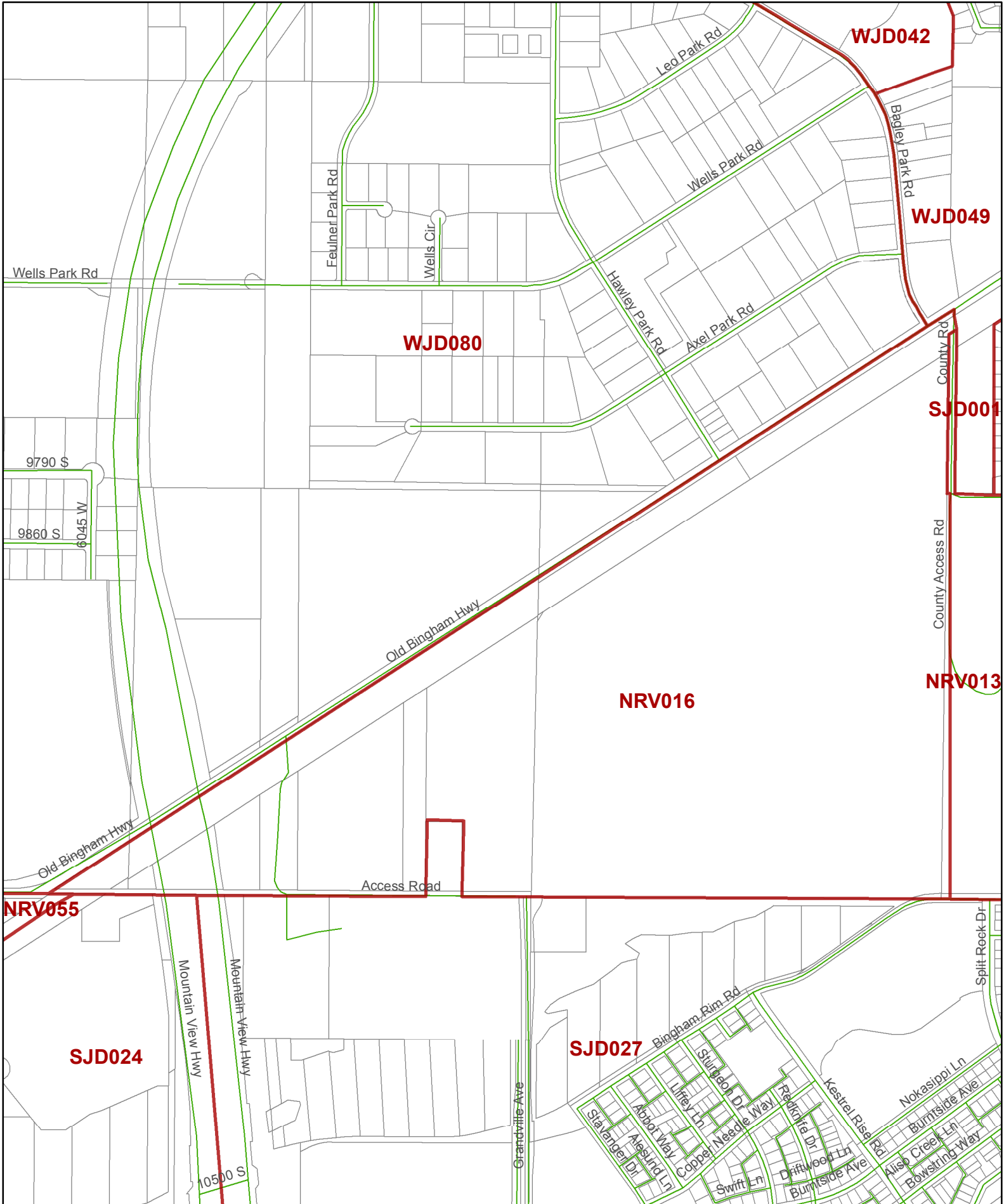


Precinct NRV016



From the office of:
SHERRE SWENSON
Salt Lake County Clerk
2001 S State St, 5th Fl, 200
Salt Lake City, UT 84143
(385) 468-8883

Legend

- Streets
- 2017_Voting Precincts
- Parcels

In conjunction with the offices of:
Salt Lake County Assessor
Salt Lake County Recorder
Salt Lake County Surveyor



Map Date: May, 2017