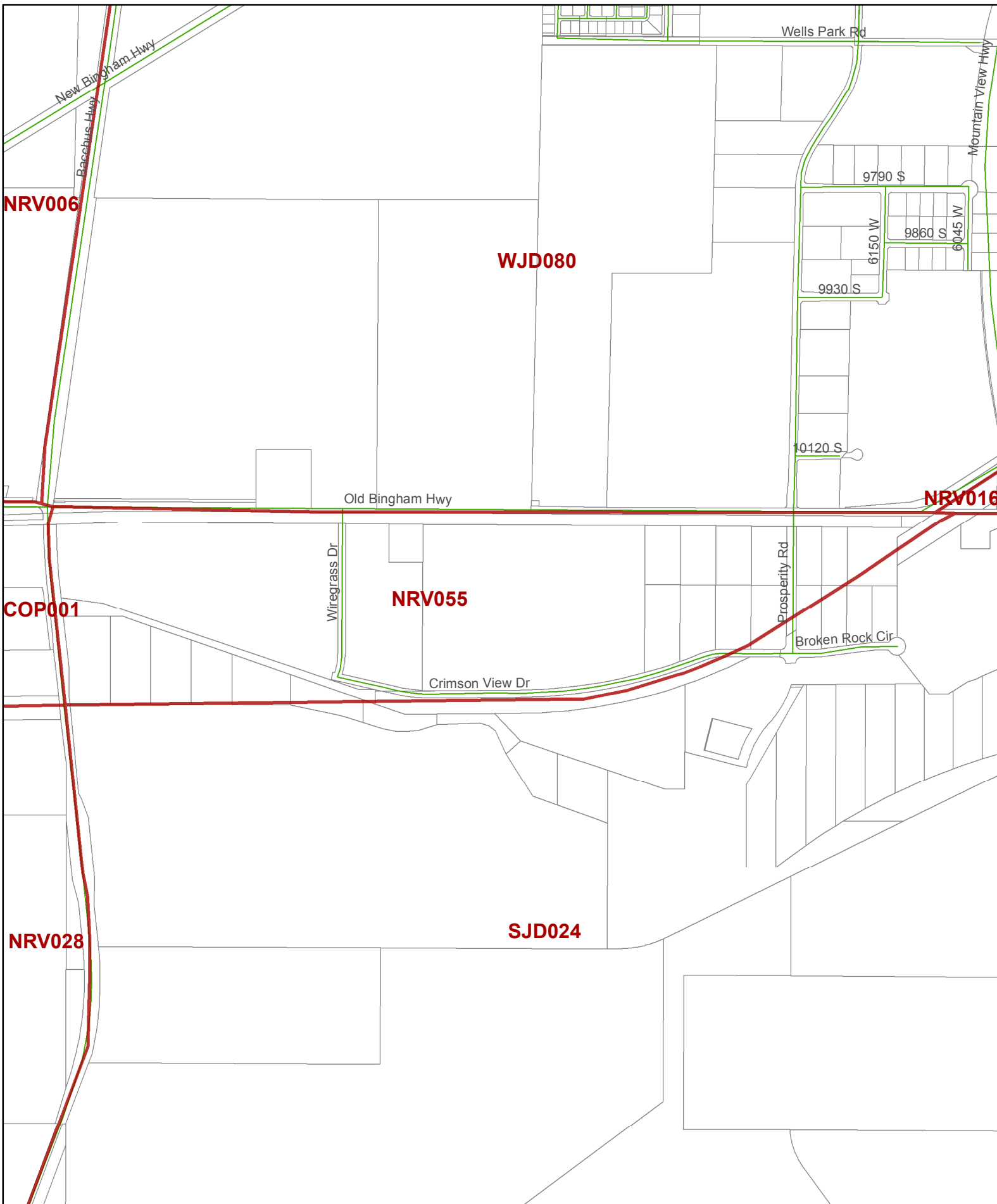


# Precinct NRV055



From the office of:  
SHERRE SWENSEN  
Salt Lake County Clerk  
2001 S State St, 5th Fl, 200  
Salt Lake City, UT 84110  
(385) 468-8683

### Legend

- Streets
- 2017\_Voting Precincts
- Parcels

In conjunction with the offices of:  
Salt Lake County Assessor  
Salt Lake County Recorder  
Salt Lake County Surveyor



Map Date: May, 2017