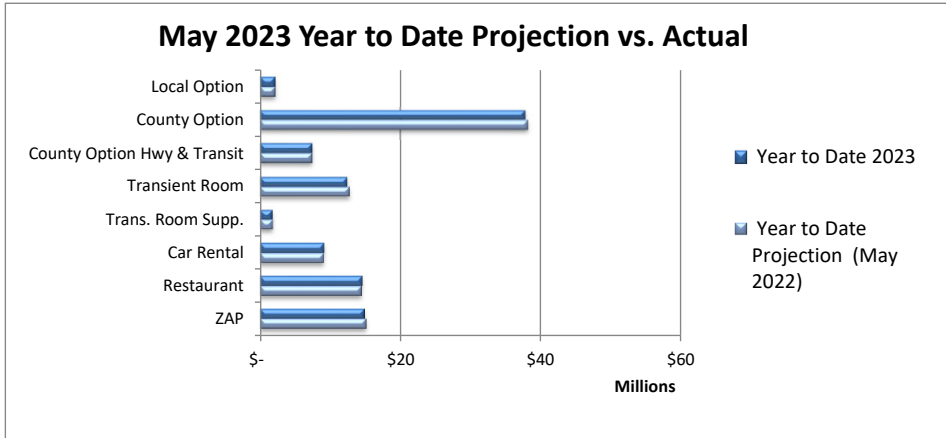
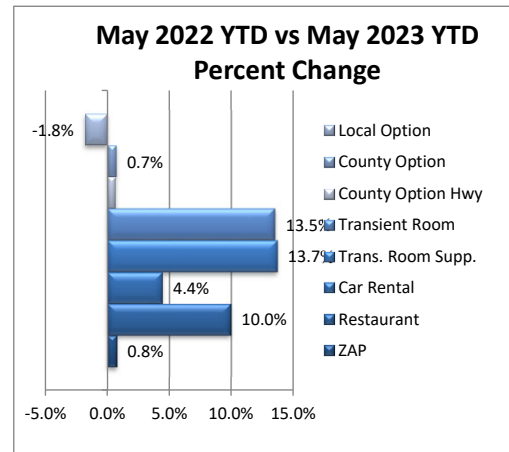
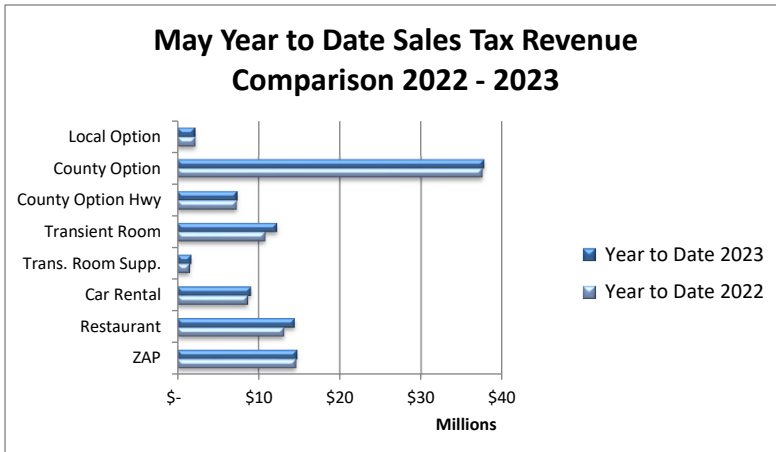


Actual Sales Tax Receipts versus Projected Year to Date through May 2023



Tax	Year to Date 2023	Year to Date Projection (May 2022)	Difference	Diff. %
Local Option	\$ 2,060,419	\$ 2,081,000	\$ (20,581)	-1.0%
County Option	\$ 37,770,854	\$ 38,224,000	\$ (453,146)	-1.2%
County Option Hwy & Transit	\$ 7,338,987	\$ 7,330,100	\$ 8,887	0.1%
Transient Room	\$ 12,254,340	\$ 12,592,500	\$ (338,160)	-2.7%
Trans. Room Supp.	\$ 1,698,906	\$ 1,739,700	\$ (40,794)	-2.3%
Car Rental	\$ 9,041,113	\$ 8,981,400	\$ 59,713	0.7%
Restaurant	\$ 14,428,407	\$ 14,319,800	\$ 108,607	0.8%
ZAP	\$ 14,681,515	\$ 14,933,900	\$ (252,385)	-1.7%
TOTAL	\$ 99,274,540	\$ 100,202,400	\$ (927,860)	-0.9%

Salt Lake County Year to Date Sales Tax Compared to Prior Year Year to Date Through May 2023

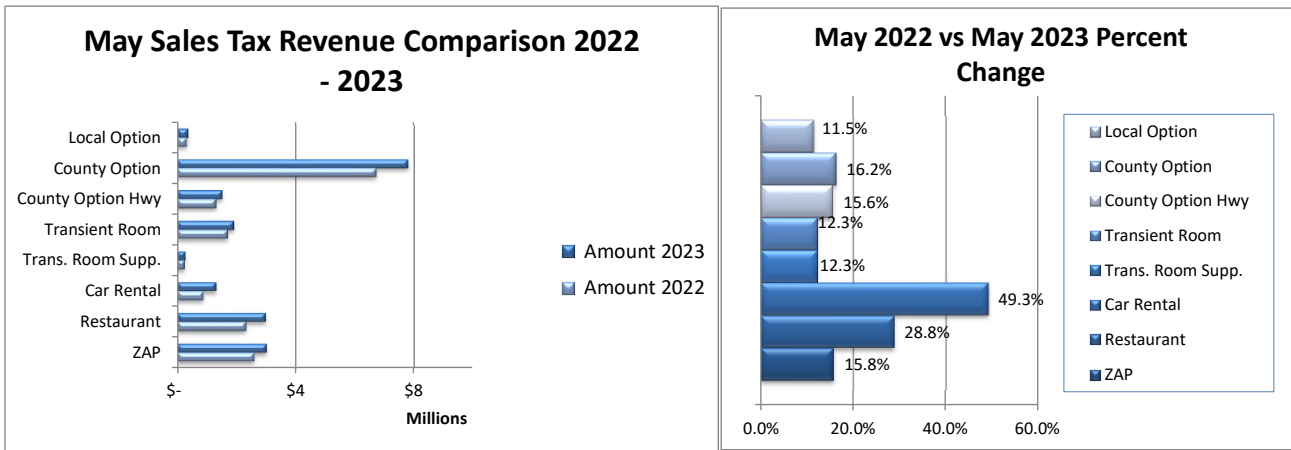


Tax	Year to Date 2023	Year to Date 2022	Difference	Diff. %
Local Option	\$ 2,060,419	\$ 2,098,930	\$ (38,511)	-1.8%
County Option	\$ 37,770,854	\$ 37,496,415	\$ 274,438	0.7%
County Option Hwy	\$ 7,338,987	\$ 7,290,226	\$ 48,762	0.7%
Transient Room	\$ 12,254,340	\$ 10,792,788	\$ 1,461,552	13.5%
Trans. Room Supp.	\$ 1,698,906	\$ 1,493,811	\$ 205,094	13.7%
Car Rental	\$ 9,041,113	\$ 8,656,474	\$ 384,638	4.4%
Restaurant	\$ 14,428,407	\$ 13,121,060	\$ 1,307,347	10.0%
ZAP	\$ 14,681,515	\$ 14,570,766	\$ 110,748	0.8%
TOTAL	\$ 99,274,540	\$ 95,520,471	\$ 3,754,069	3.9%

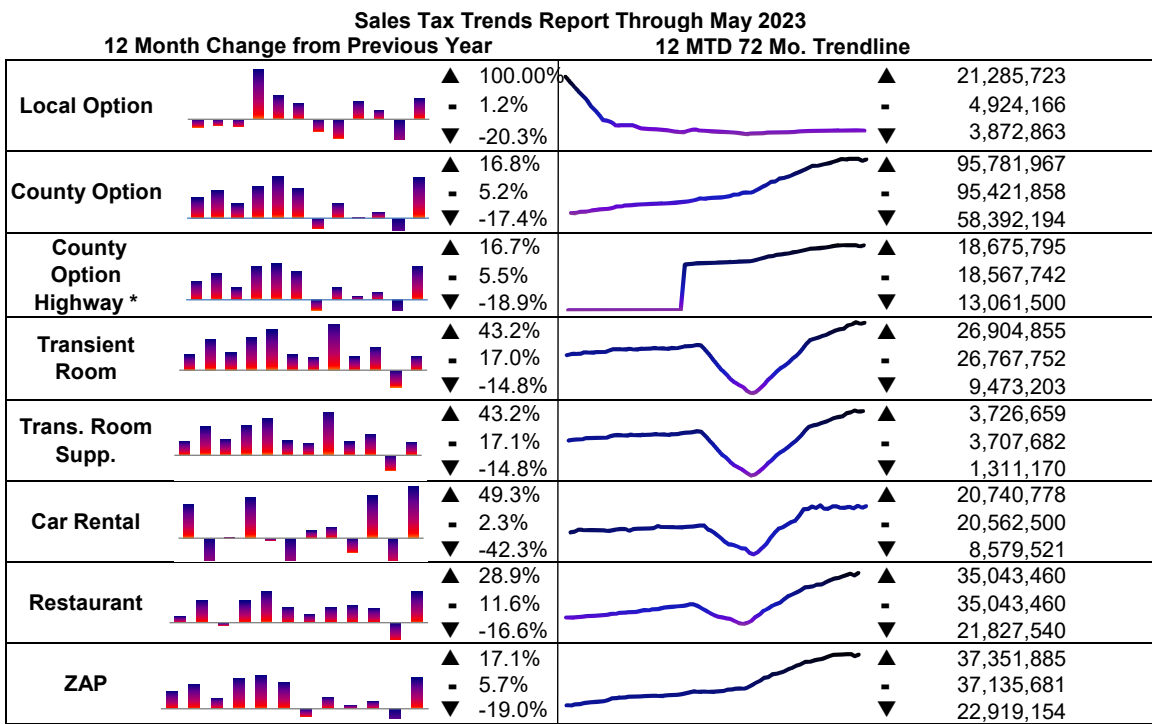
Prepared by: Salt Lake County Mayor's Financial Administration, Planning & Budget

Salt Lake County Monthly Sales Tax Compared to Prior Year

May 2023



Tax	Amount 2023	Amount 2022	Difference	Diff. %
Local Option	\$ 352,742	\$ 316,481	\$ 36,261	11.5%
County Option	\$ 7,801,548	\$ 6,711,560	\$ 1,089,988	16.2%
County Option Hwy	\$ 1,504,554	\$ 1,302,054	\$ 202,500	15.6%
Transient Room	\$ 1,900,481	\$ 1,692,977	\$ 207,504	12.3%
Trans. Room Supp.	\$ 263,042	\$ 234,322	\$ 28,720	12.3%
Car Rental	\$ 1,304,313	\$ 873,754	\$ 430,559	49.3%
Restaurant	\$ 2,976,127	\$ 2,310,002	\$ 666,125	28.8%
ZAP	\$ 3,006,862	\$ 2,597,626	\$ 409,236	15.8%
TOTAL	\$ 19,109,669	\$ 16,038,776	\$ 3,070,894	19.1%



Explanation of 12 Month Change from Previous Year Section
 This section presents a series of month-over-month changes from prior year, as well as 12 month to 12-month percentage change.
Bar Chart. Each bar represents percentage change of one month of the most recent 12 months, compared to the same month one year previous.
High/Current/Low Table. This table shows the highest and lowest month-over-month changes in the most recent 12 months. It also shows in the center the "current" value, the most recent 12 months compared to the same 12 months one year previous (12 over 12).
Interpreting the trend data. The bar chart will show fluctuations are a normal part of the distribution process. While any given month does not make a trend, if the values are predominantly one way or the other, this indicates a trend in that direction. The 12 over 12 number gives an indication of what the annual growth

Explanation of 12 Months To Date 72 Month Trendline Section
 This section is based on a series of moving 12-month totals. The value of the 12-month moving total is twofold. First, totalling 12 months helps smooth out the distributional fluctuations. Second, the 12-month total gives you a proxy "annual" figure showing what annual revenue would be if the year ended in the current month.
Line Graph and High/Current/Low Table. The line graph is self-explanatory. The high/current/low table puts the current figure in the context of historical figures.
 * County option sales and use tax for highways and public