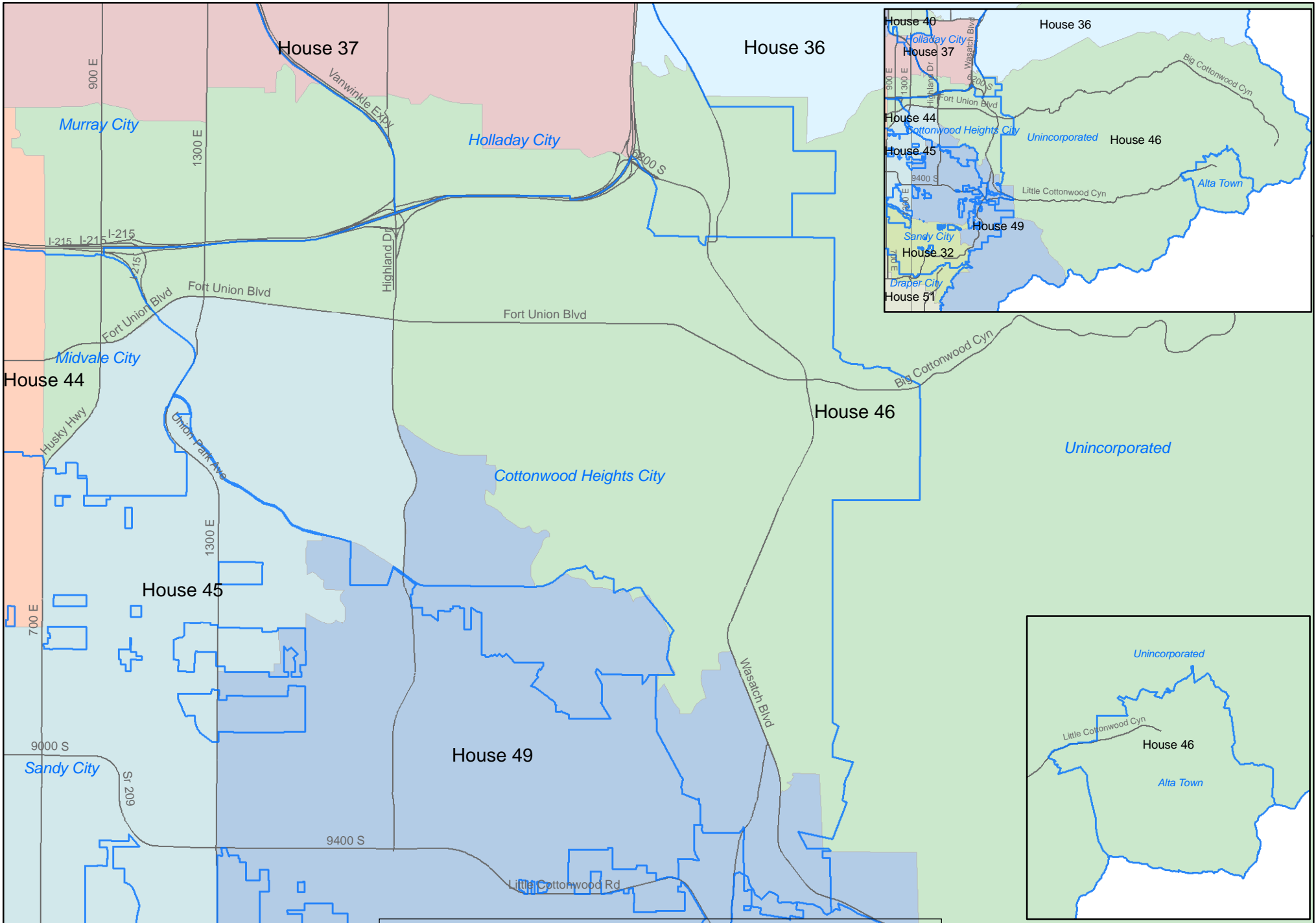


Utah House of Representative District 46



From the office of:
SHERRIE SWENSEN
 Salt Lake County Clerk
 2001 S State St, Rm S1 200
 Salt Lake City, UT 84114
 (385) 468-7400

Legend		House District																			
	Major Streets		24		28		32		35		38		41		44		47		51		
	Municipalities		22		25		30		33		36		39		42		45		49		52
			23		26		31		34		37		40		43		46		50		



In conjunction with:
 Salt Lake County Assessor
 Salt Lake County Recorder
 Salt Lake County Surveyor

Map Date: February 2015