

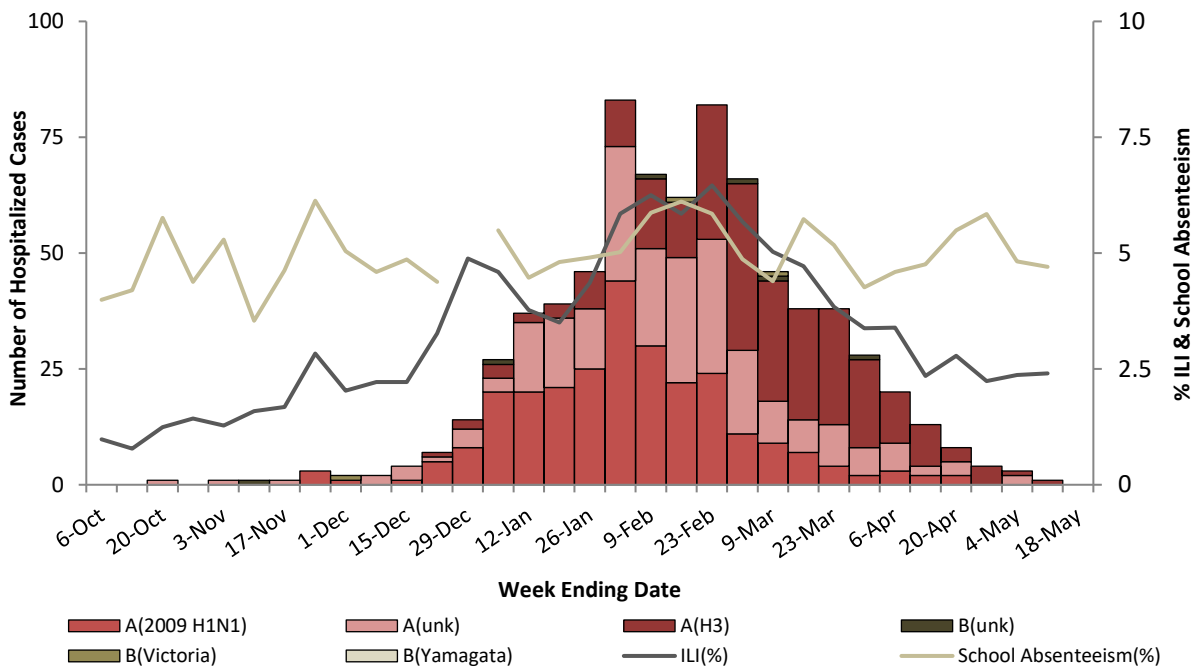
Salt Lake County Weekly Influenza Surveillance Report

Epidemiology Bureau

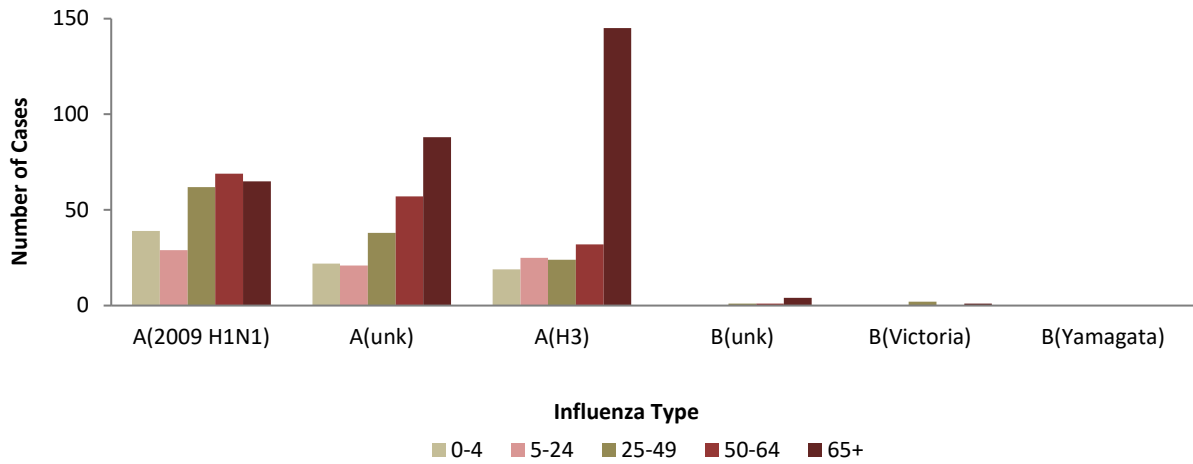
Week 19: May 5 – May 11

INFLUENZA SUBTYPE	HOSPITALIZED INFLUENZA CASES	INFLUENZA RELATED DEATHS
INFLUENZA A		
H3N2	246	5
2009 H1N1	264	5
UNKNOWN	225	8
INFLUENZA B		
YAMAGATA	0	0
VICTORIA	3	0
UNKNOWN	6	0
UNKNOWN	1	0
TOTAL	745	18

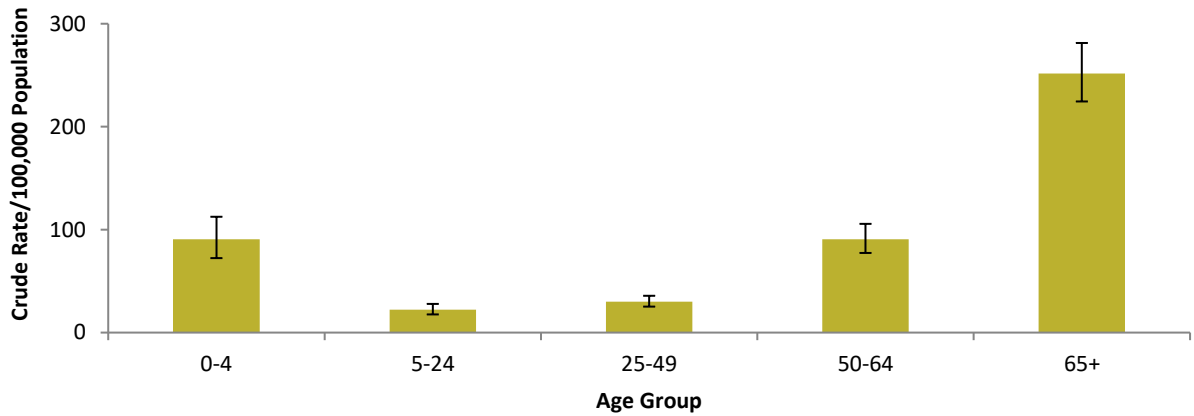
2018-2019 Influenza Season: Weekly Surveillance Data



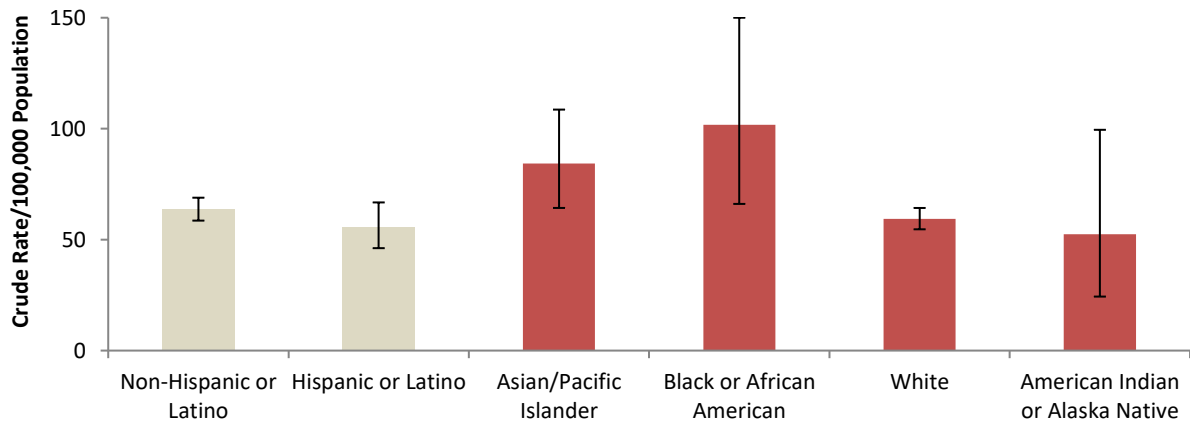
Hospitalized Influenza Cases by Type per Age Group, Salt Lake County



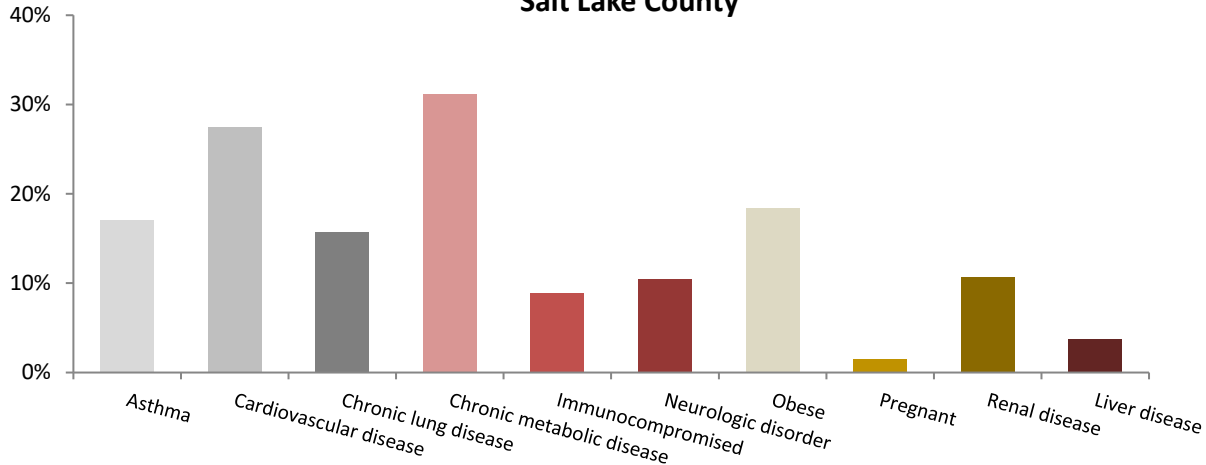
Hospitalized Influenza Rates by Age Group Salt Lake County



Hospitalized Influenza Rates by Race & Ethnicity Salt Lake County



Underlying Medical Conditions Among Hospitalized Influenza Patients Salt Lake County



Influenza Season Severity Assessment Comparison: Salt Lake County, Utah and the United States

	2012-13	2013-14	2014-15	2015-16	2016-17	2017-18	2018-19
Salt Lake County	Moderate	Moderate	Very High	Moderate	Moderate	High	Low
Utah	Moderate	Moderate	High	Moderate	Moderate	High	Low
United States	Moderate	Moderate	High	Moderate	Moderate	High	N/A

*Reference <https://www.cdc.gov/flu/professionals/classifies-flu-severity.htm> for threshold methodology

*Salt Lake County indicators used for severity assessment include deaths (influenza-related deaths), outpatient cases (influenza-like illness from Germwatch) and inpatient cases (influenza-related hospitalizations from FluSurv-NET).

* For Utah indicators see: <http://health.utah.gov/epi/diseases/influenza/surveillance/index.html>

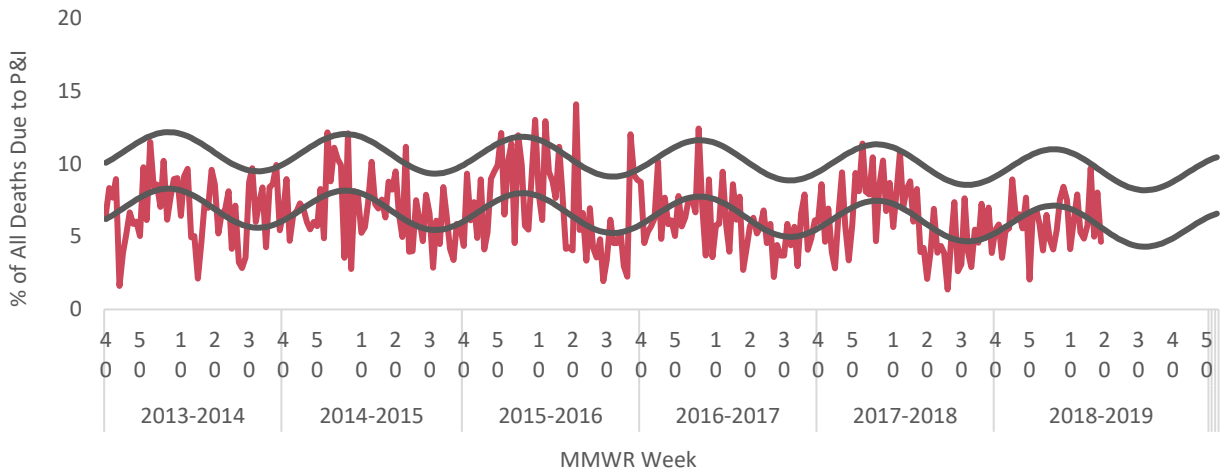
*US indicators used for severity assessment include outpatient cases (influenza-like illness from ILINET), inpatient cases (influenza-related hospitalizations from FluSurv-NET) and deaths (influenza and pneumonia related deaths from NCHS).

Severity Index for Salt Lake County Hospitalized Influenza Patients

Age Group	Total Cases	% Vaccinated	% ICU	% Vent	% Vasopressors	% Pneumonia	% Underlying Health Conditions
0-4	80	38	20	8	3	10	31
5-24	74	36	23	7	3	5	61
25-49	127	25	24	9	7	29	71
50-64	159	35	18	4	4	24	81
65+	305	58	17	4	3	23	74
Total	745	43	20	6	4	21	69

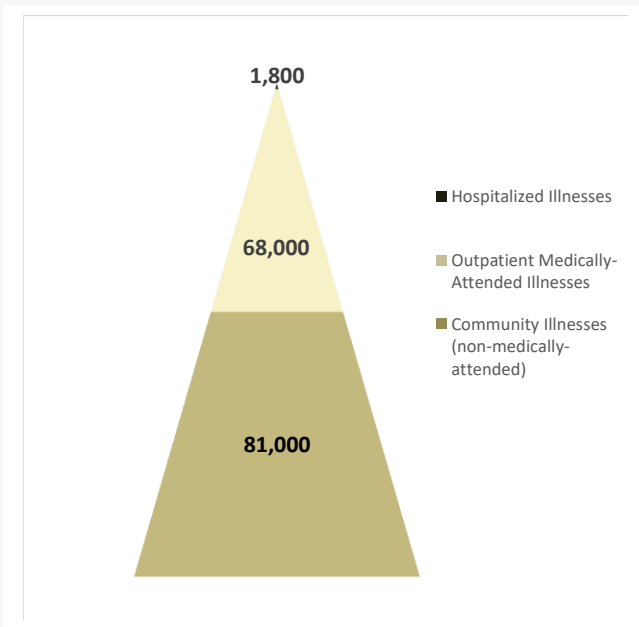
Pneumonia and Influenza Mortality for Salt Lake County

Week ending May 11, 2019

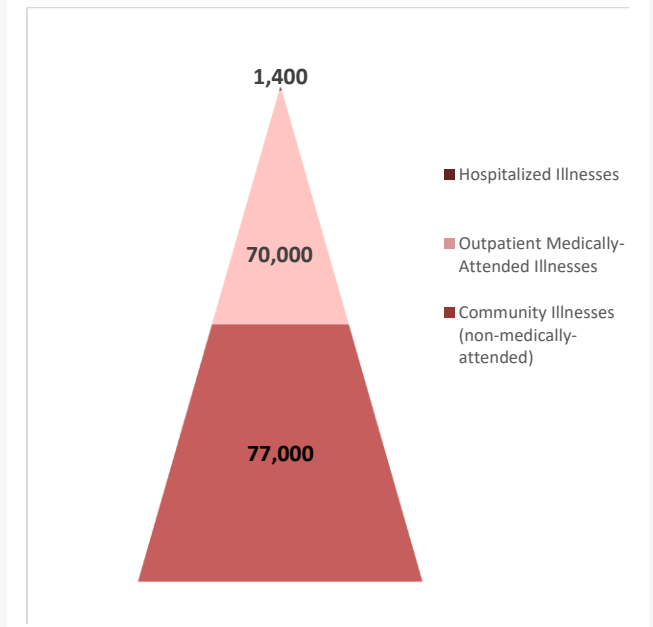


Salt Lake County Influenza Burden Estimates: Two Season Comparison

2017-18 Season



2018-19 Season



Above is a burden pyramid, displaying the current estimated burden of influenza throughout Salt Lake County. As of May 11, 2019, for the 2018-19 season, Salt Lake County is estimated to have had 1,400 influenza-related hospitalizations, 70,000 outpatient medical visits due to influenza and 77,000 symptomatic non-medically attended influenza illnesses. The methods used to calculate these estimates follow CDC's methodology* and incorporate Salt Lake County-specific influenza hospitalization testing practices to account for under-detection of hospitalized influenza illnesses.

* <https://www.cdc.gov/flu/about/burden/how-cdc-estimates.htm>

Data in this report is provisional