

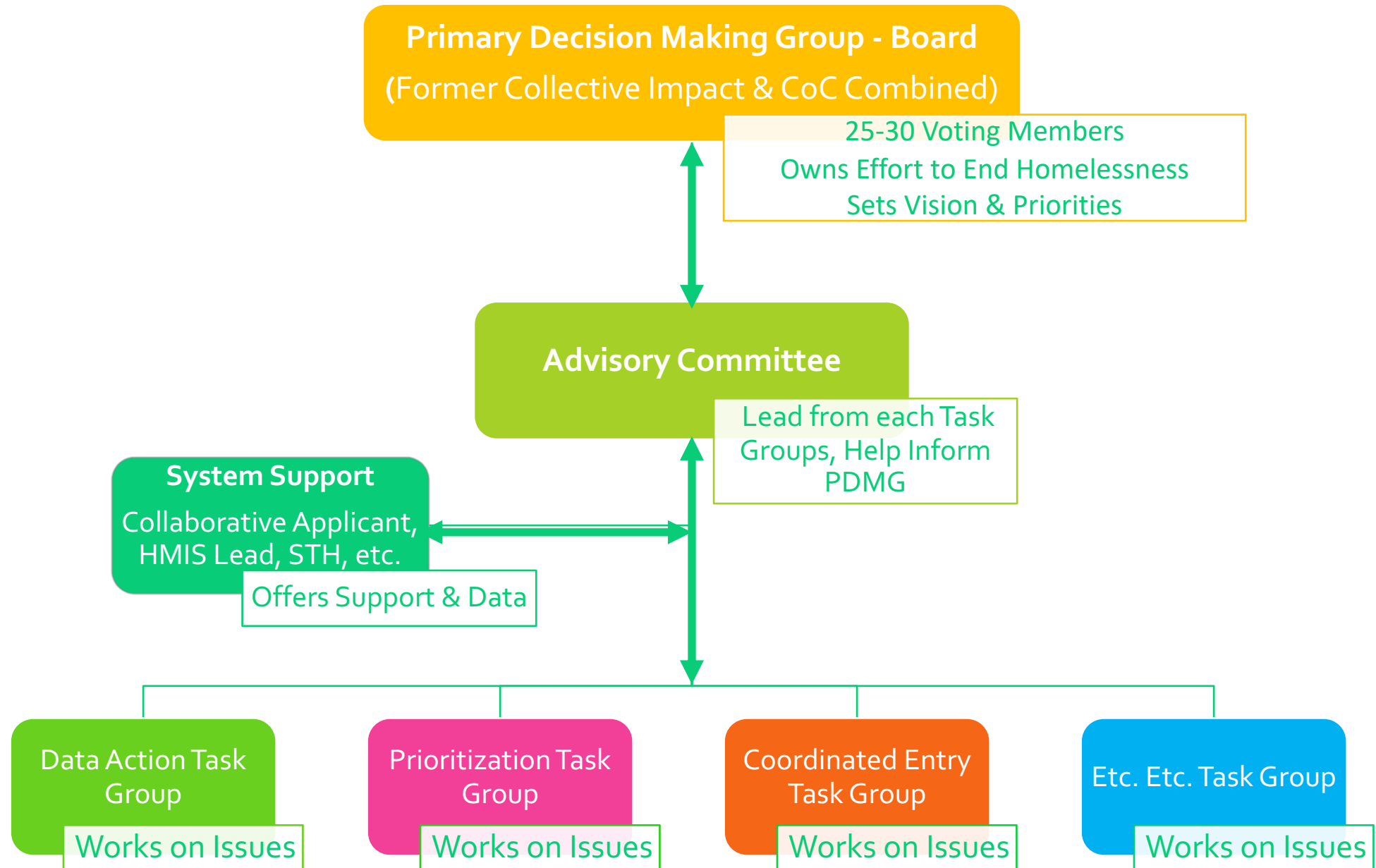
OUR GOAL IS TO ESTABLISH A STRONG AND EFFECTIVE HOMELESS SYSTEM STRUCTURE FOR SALT LAKE COUNTY THAT:

- Supports a community wide commitment to ending homelessness.
- Unites communities and service providers in profoundly new ways.
- Aligns multiple funding streams for efforts to quickly rehouse homeless individuals and families while minimizing trauma and dislocation caused to homeless individuals, families, and communities.
- Promotes access to and effective utilization of mainstream programs by homeless individuals and families.
- Optimizes self-sufficiency among individuals and families experiencing homelessness
- Reinforces an overall system planning effort which includes all resources, stakeholders, and funding.
- Provides multiple opportunities for client input and feedback.

RESEARCH AND ACTIONS THAT INFORMED PROPOSAL

- Board Executive Committee Work
 - Conducted assessment of current system
 - Researched best practices of other communities
- Conversations with CoC and Community Stakeholders
- Work Group
 - Rob Wesemann, Jean Hill, Geoff Landward, Staci Stephens, Michelle Flynn, Tricia Davis, Preston Cochrane, and Katherine Fife, Andrew Johnston, Kathy Bray, Kim Correa, Patrice Dickson, etc.
- HUD Guidance
 - Suzanne Wagner
 - Housing Innovations, Consultant
 - Patrick Wigmore, Sonoma County
 - HomeBase, HUD Technical Assistance Provider
- Legislative Audit - Released December 2018

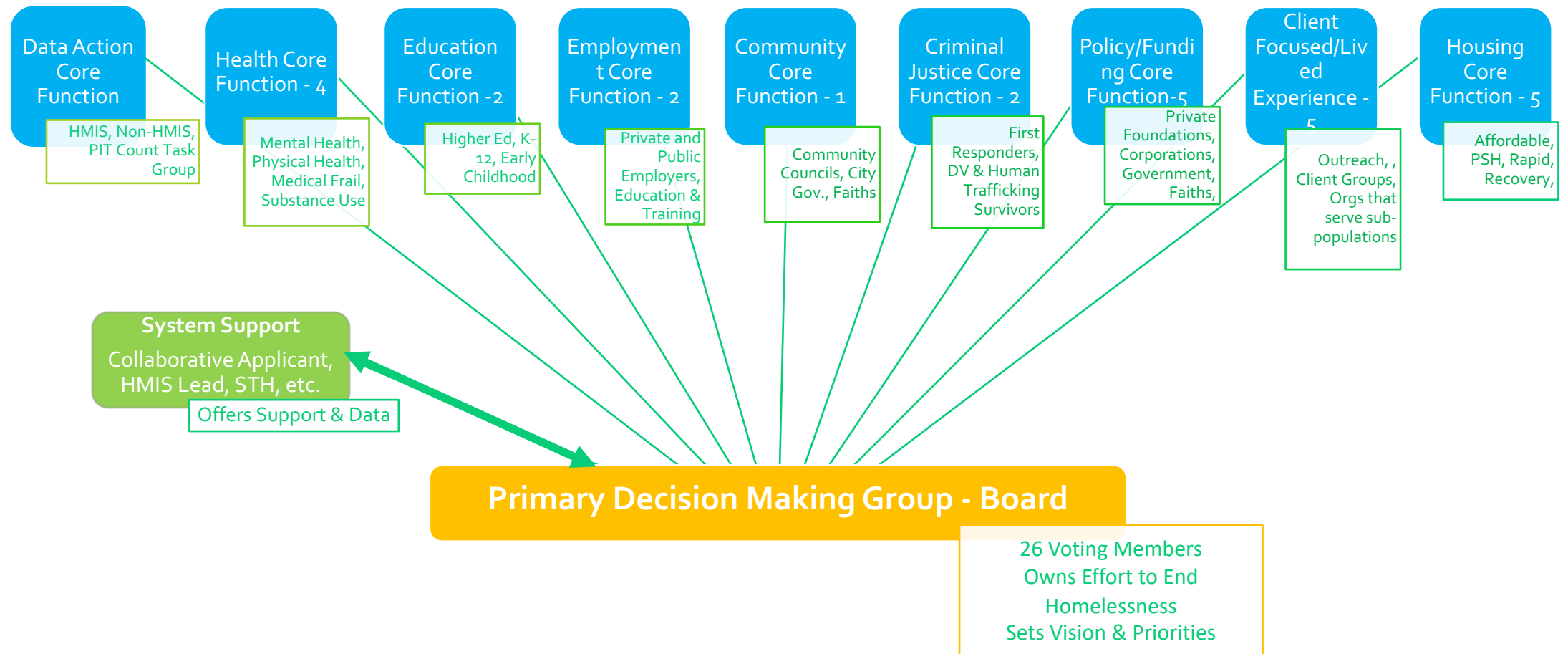
SALT LAKE COUNTY – PROPOSED SYSTEM



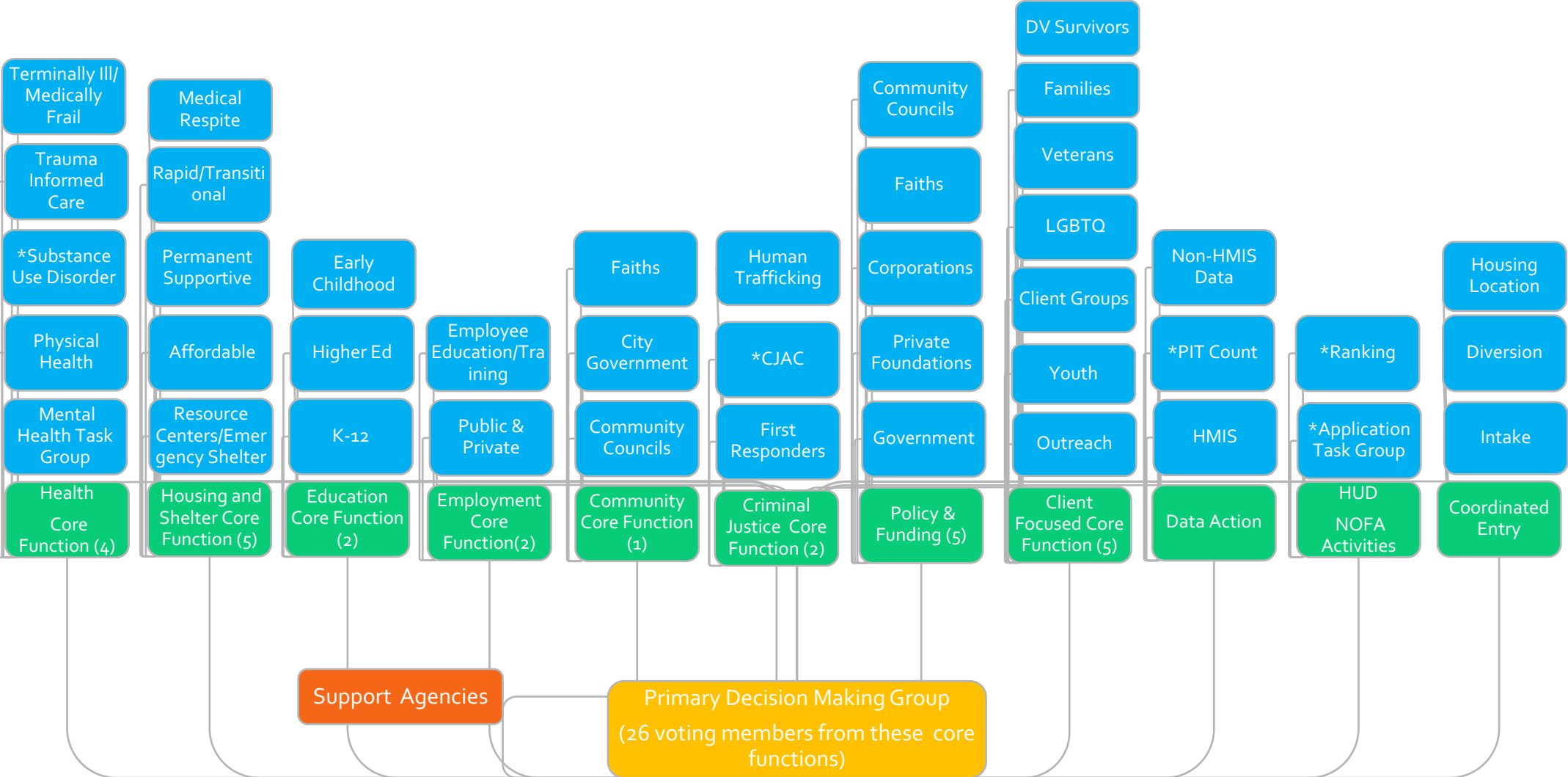
ALTERNATE VIEW – PROPOSED HOMELESS SYSTEM STRUCTURE



ALTERNATE VIEW OF ADDITIONAL PROPOSED SYSTEM



ALTERNATE VIEW OF ADDITIONAL PROPOSED SYSTEM OPTION



*Existing group

FUNCTIONS OF PRIMARY DECISION MAKING GROUP

- OWNS Ending Homelessness in Salt Lake County
- Promotes community-wide planning and strategic use of resources
- Aligns policy and funding priorities
- Uses data and information from all the core groups to produce an annual report (focus document) which identifies progress, gaps, and priorities in Salt Lake County
- Annual report will be released publicly and sent to the Utah Legislature, jurisdictions in Salt Lake County, funders, and other stakeholders to use as guidance in policy and funding decisions. .
- Improves coordination, synergy and integration among resources and services
- Improves data collection and performance measurement
- Holds MOUs (or equivalent) with Support Agencies
 - Collaborative Applicant
 - HMIS Lead
 - Shelter The Homeless
 - Other, as needed
- Votes on system policy, priorities, and strategies
 - members include representative(s) from each group of engaged and relevant stakeholders
 - voting rights belong to the entities which represent relevant stakeholders
 - voting rights will be balanced to ensure that no one entity or group of related stakeholders will have the ability to control the votes
- Has representation on and will work with the State Homeless Coordinating Committee to share information, use consistent data in materials, and set priorities in Salt Lake County that feed into State priorities.
- Meets Every Other Month

ADDITIONAL SYSTEM FUNCTIONS

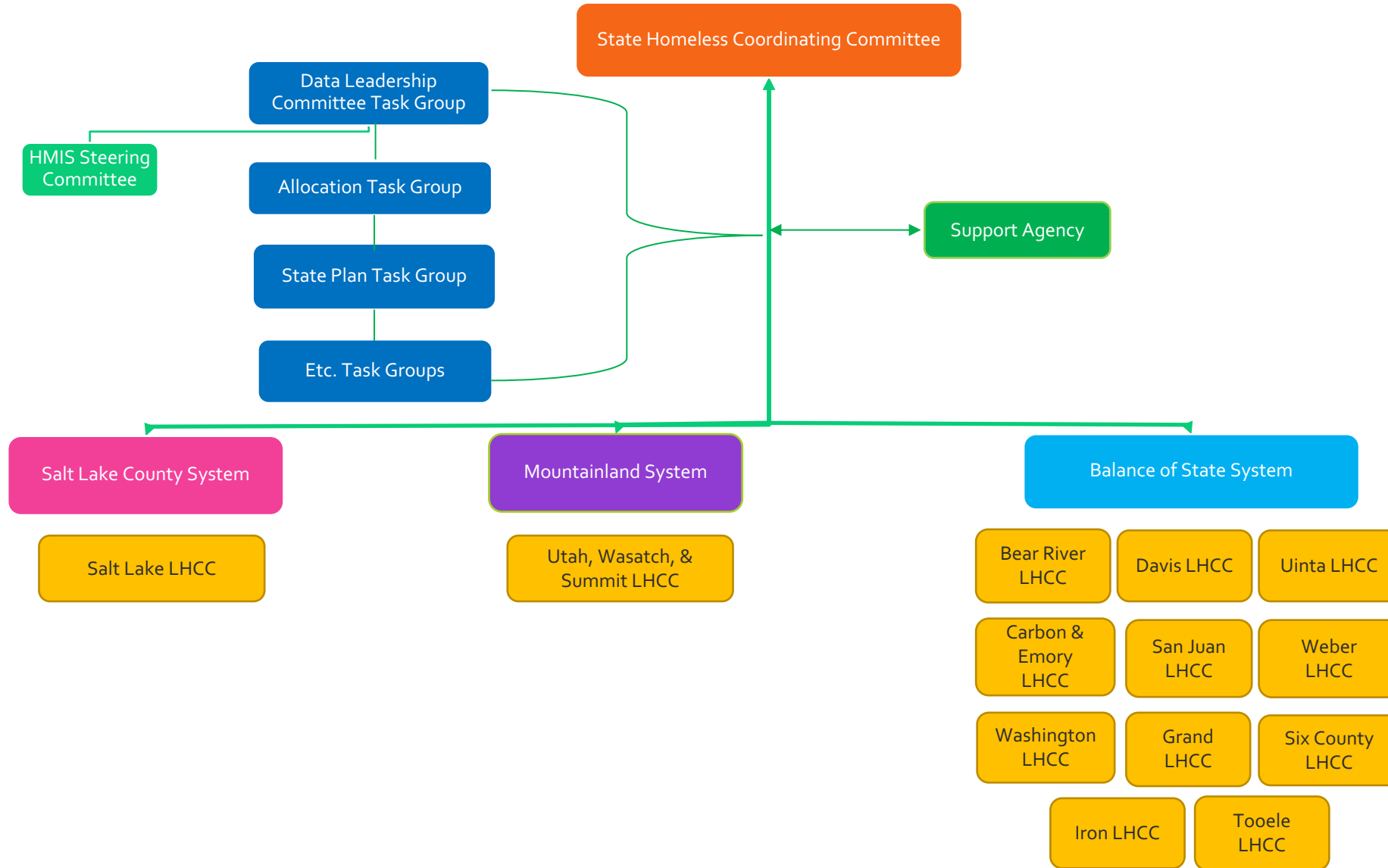
Task Groups

- Members self identify task group(s) in which they participate
- Reflect broad participation working on specific issues
- Identify information and data regarding issues
- Meet regularly or ad hoc
- Made up of voting & nonvoting members
 - Multiple representatives from each engaged stakeholder group
 - Multiple representatives from agencies
- Informs Primary Decision Making Group
- Nominate voting members

Support Agencies

- Offer support and data at all levels of system
 - PDMG will be supported by (at least) one representative from (at least) two support agencies
 - Task groups will be supported by support agencies as needed
- Hold MOU (or equivalent) with Primary Decision Making Group
- Assist with developing reports and compiling data
- Assist with communications & marketing

STATE OF UTAH – HOMELESS SYSTEM STRUCTURE



TOGETHER, WE...

- have an opportunity to make system-wide change.
- have an opportunity to de-duplicate efforts in the community.
- can focus on specific needs in the community.
- can help inform recommendations of the State Audit on homelessness.
- can help align the voices of all stakeholders.
- are experiencing strong coordination between CoC leadership, HMIS Lead and Collaborative Applicant.
- should utilize the momentum of the Collective Impact Steering Committee.
- can help build a sustainable system to effectively respond to homelessness that endures inevitable change in the community & leadership.
- create clear system oversight through the establishment of a supported governance structure.

PROPOSED TIMELINE

- December 2018
 - Present proposed structure at Collective Impact Steering Committee meeting (12/12) - *DONE*
 - Update CoC Board and Membership (12/6 & 12/20) - *DONE*
 - Accept new structure name proposals (12/20 – 1/14) – In Progress
- January 2019
 - Work group to finalize membership and structure details (1/3, 1/8, 1/14, etc.)
 - Update STH Board (1/9)
 - Update CoC Board and Membership (1/3 & 1/17)
- February
 - CoC Board & Membership vote on new structure (2/7 & 2/21)
 - Update at Collective Impact Steering Committee meeting (2/13)
- March
 - STH Board vote on new structure
 - Transition to new structure
- April
 - Launch new structure

FAQS (WORKING DRAFT)

- ***Will the other groups (CoC, CI) still continue once this new structure is in place?***
 - The new structure combines the strengths of each of these entities, which will no longer exist as they are currently structured.
- ***What is the role of DWS-HCD?***
 - DWS – HCD will be a support agency. Currently they are the HMIS Lead for all the CoCs in Utah. Shelter the Homeless may participate in task groups.
- ***What is the role of Salt Lake County?***
 - Salt Lake County will be a support agency. Currently they are the Collaborative Applicant for the CoC. Shelter the Homeless may participate in task groups.
- ***What is the role of Shelter the Homeless?***
 - Shelter the Homeless will be one of the support agencies for the new system. Currently, they are the support/staffing for CI. Shelter the Homeless may participate in task groups.
- ***How is membership determined?***
 - All stakeholders can become members and participate in one or more task group.
 - Task Group members make nominations for voting members, who make up the Primary Decision Making Group. The Primary Members of the PDMG vote on new voting members.
- ***How does my organization get involved?***
 - Complete and submit the membership form indicating how the organization wants to be involved.
 - The Primary Decision Making Group will accept nominations from Task Groups and vote to approve voting members.

FAQS (CONT.)

- *What Will The PDMG vote on?*
 - Membership, governance, policies, priorities, strategies, etc.

- *What other questions are there that we need to include????*

NAME SUGGESTIONS RECEIVED TO DATE

(AS OF 1/8/18)

- Coalition to End Homelessness (in) Salt Lake (County)
- Salt Lake County Coalition to End Homelessness
- House Utah Together, House Salt Lake County Together, Etc.

GLOSSARY OF TERMS

- Continuum of Care (CoC) -
- Collective Impact (CI)
- Trauma-informed care
- Domestic Violence
- What else do we need to add?????