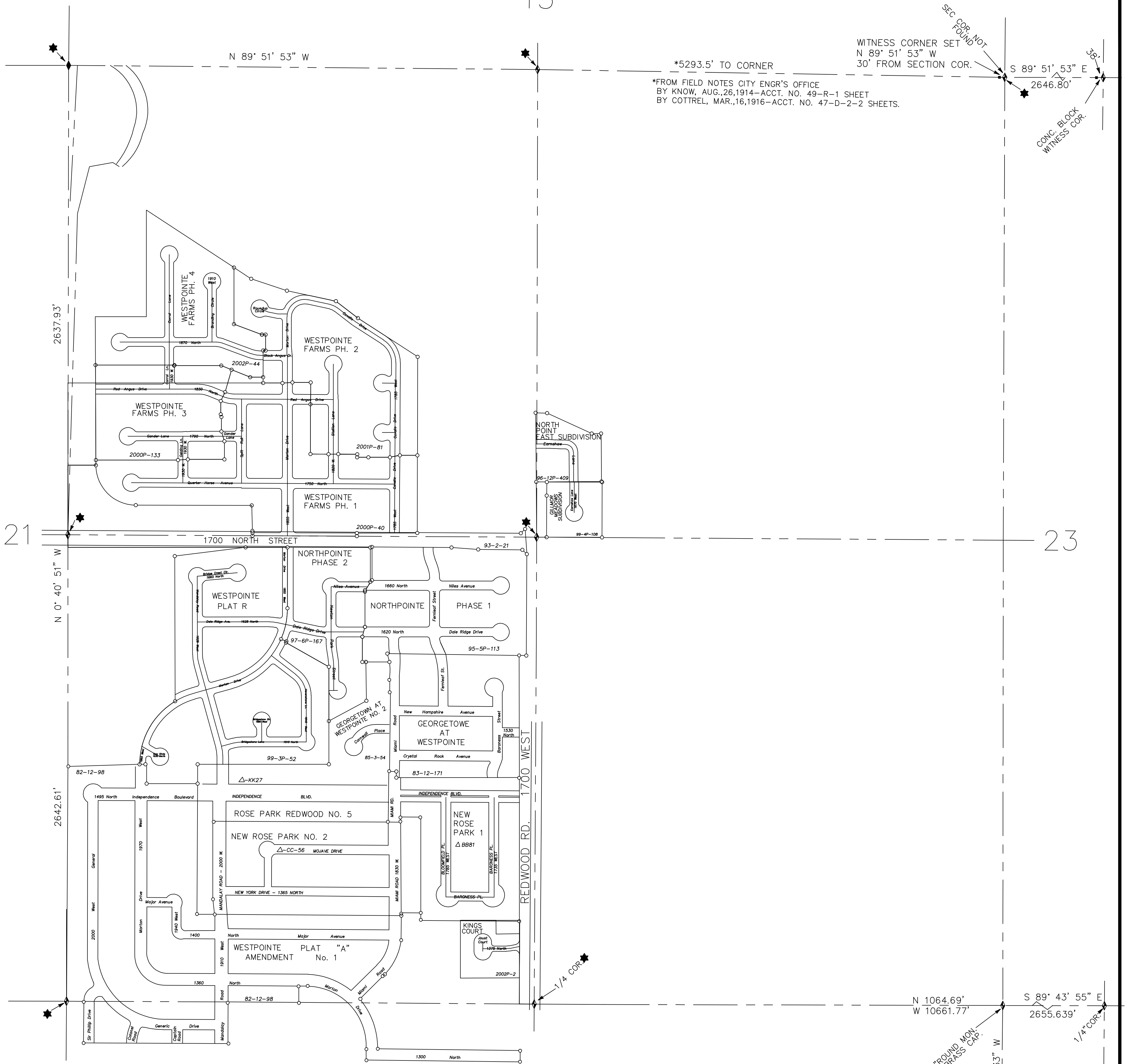


15



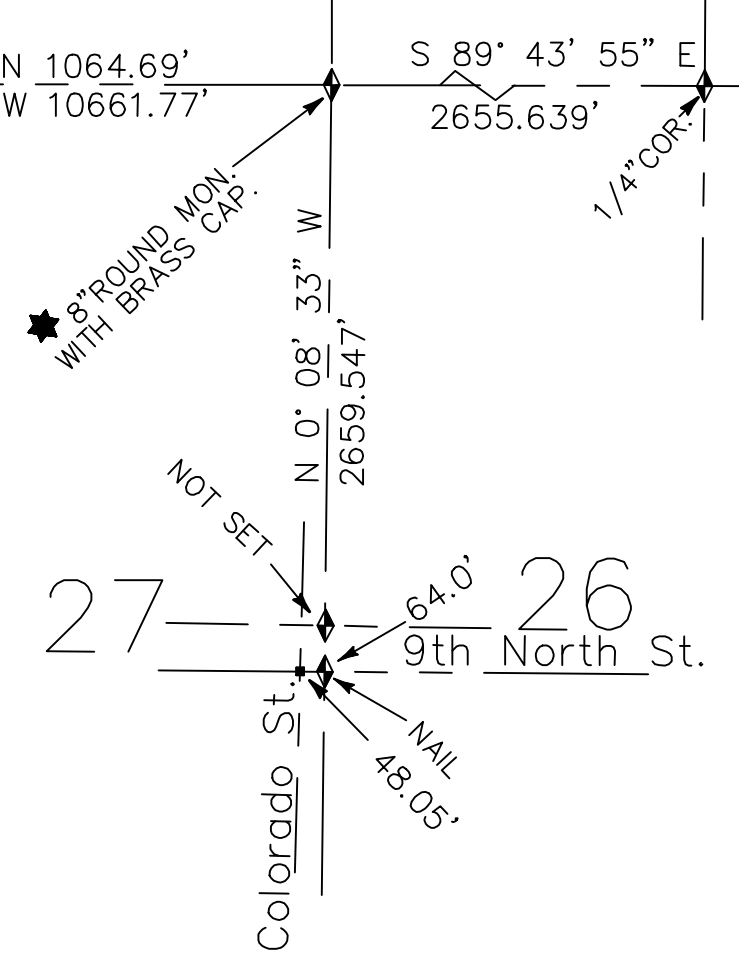
*5293.5' TO CORNER
 *FROM FIELD NOTES CITY ENGR'S OFFICE
 BY KNOW, AUG.26,1914-ACCT. NO. 49-R-1 SHEET
 BY COTTRELL, MAR.,16,1916-ACCT. NO. 47-D-2-2 SHEETS.

WITNESS CORNER SET
 N 89° 51' 53" W
 30' FROM SECTION COR.
 S 89° 51' 53" E
 2646.80'
 SEC COR. FOUND
 CONC. BLOCK WITNESS COR.

21

23

27



NOTICE
 THE VALUES SHOWN HEREON REFERENCE THIS PLAT ONLY. ADJACENT AREA REFERENCE PLATS MAY SHOW DIFFERENT VALUES FOR IDENTICAL LINES.
 A.R.P. VALUES HAVE BEEN GATHERED OVER A NUMBER OF YEARS, USING A VARIETY OF EQUIPMENT WITH VARYING DEGREES OF ACCURACY. ALL INFORMATION SHOWN IS FOR REFERENCE ONLY AND SHOULD BE FIELD VERIFIED. COPIES OF FIELD TRAVERSES ARE AVAILABLE FOR MOST SECTIONS.
 STATE PLANE COORDINATES ARE ALSO AVAILABLE FOR SOME SECTIONS.
 PLEASE CHECK WITH STAFF.

SEC. 22
 T1N-R1W
 AREA REFERENCE PLAT

- ★ - Tie Sheet Is Available
- - Designates S.L. County Surveyor's File No.
- △ - Designates S.L. County Recorder's File No.

PREPARED BY THE OFFICE OF
 THE SALT LAKE COUNTY SURVEYOR

| REVISIONS | | | |
|-----------|----------|--|---------|
| NO. | DATE | DESCRIPTION OF REVISION | INITIAL |
| 1 | 9-7-93 | Update 1993 Road Dedications | LJP |
| 2 | 1-30-95 | Insert Notice | LJP |
| 3 | 4-03-95 | Rubber Sheeted | SW |
| 4 | 6-29-95 | Northpointe Phase 1 | LJP |
| 5 | 12-18-96 | Changed S.L. Co. Surveyor - Vaughn E. Butler | BJB |
| 6 | 12-18-96 | North Point East Subdivision | BJB |
| 7 | 7-15-97 | North Point Subdivision Phase 2 | PSB |
| 8 | 5-3-99 | Westpointe Plat R | PSB |
| 9 | 5-11-99 | Gillmor Meadows Subdivision | PSB |
| 10 | 2-16-00 | Westpointe Forms Phase 1 | PSB |
| 11 | 6-29-00 | Westpointe Forms Phase 3 | PSB |
| 12 | 5-30-01 | Westpointe Forms Phase 2 | PSB |
| 13 | 2-22-02 | Kings Court Subdivision | PSB |
| 14 | 3-7-02 | Westpointe Forms Phase 4 | PSB |
| 15 | 11-15-07 | Changed S.L. Co. Surveyor - Reid J. Demman | MSK |

REID J. DEMMAN
 SALT LAKE COUNTY SURVEYOR



SCALE 1" = 300'

Date Converted - 05/07/92

22-T1N-R1W

SALT LAKE COUNTY
 GEOGRAPHIC INFORMATION SYSTEM
 ©1992

22-T1N-R1W