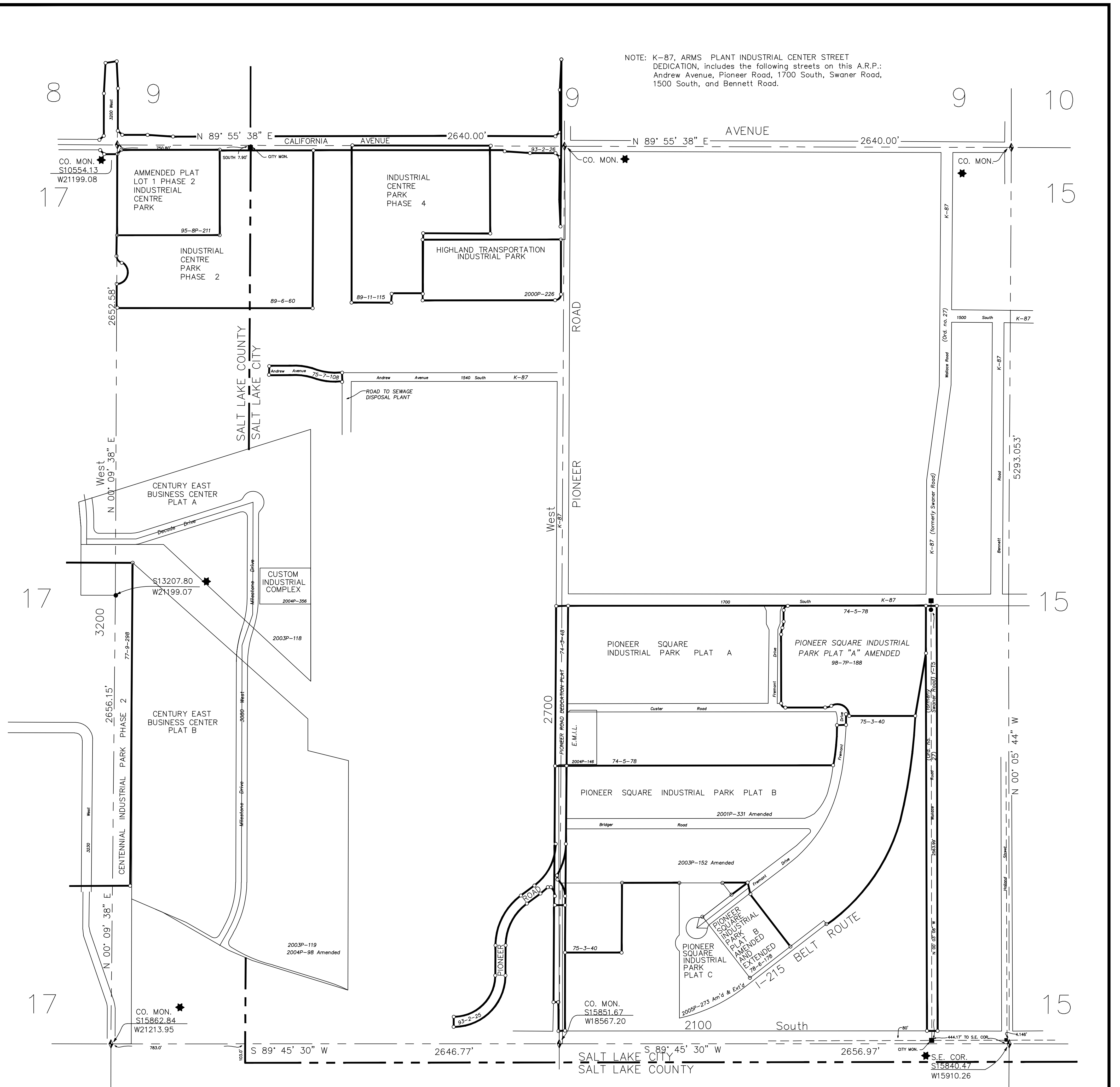


NOTE: K-87, ARMS PLANT INDUSTRIAL CENTER STREET DEDICATION, includes the following streets on this A.R.P.: Andrew Avenue, Pioneer Road, 1700 South, Swamer Road, 1500 South, and Bennett Road.



NOTE: UNABLE TO PLOT THE FOLLOWING ON THIS A.R.P.:
 Green & Maddison Sub. D-63
 Senior's 5 Acre Garden Plat 1 D-82
 Senior's 5 Acre Garden Plat 2 E-6

- ★ - Tie Sheet Is Available
- △ - Designates S.L. County Surveyor's File No.
- - Designates S.L. County Recorder's File No.

NOTICE
 THE VALUES SHOWN HEREON REFERENCE THIS PLAT ONLY. ADJACENT AREA REFERENCE PLATS MAY SHOW DIFFERENT VALUES FOR IDENTICAL LINES. A.R.P. VALUES HAVE BEEN GATHERED OVER A NUMBER OF YEARS, USING A VARIETY OF EQUIPMENT WITH VARIOUS DEGREES OF ACCURACY. ALL INFORMATION SHOWN IS FOR REFERENCE ONLY AND SHOULD BE FIELD VERIFIED. COPIES OF FIELD TRAVERSES ARE AVAILABLE FOR MOST SECTIONS. STATE PLANE COORDINATES ARE ALSO AVAILABLE FOR SOME SECTIONS. PLEASE CHECK WITH STAFF.

REVISIONS			
NO.	DATE	DESCRIPTION OF REVISION	INITIAL
1	9-8-93	Update 1993 Street Dedications	LJP
2	3-30-95	Rubber Sheeted	SW
3	10-17-95	Change S.L. County Surveyor, Vaughn E. Butler	ALM
4	10-17-95	Standardize Layer Colors	ALM
5	10-17-95	Amend Plat Lot 1 Phase 2 Ind. Cent. Park Sub	ALM
6	7-20-98	Pioneer Square Ind. Park Plat A Amended	MDS
7	9-18-00	Highland Transportation Ind. Prk	PSR
8	12-18-01	Pioneer Square Ind. Park Plat B Amended	PSR
9	7-16-03	Century East Business Center Plat A	PSR
10	7-16-03	Century East Business Center Plat B	PSR
11	7-16-03	Pioneer Square Ind. Park Plat B Amended	PSR
12	5-3-04	Century East Business Center Plat B Am'd	PSR
13	7-12-04	E.M.I.L. Subdivision	PSR
14	12-10-04	Custom Industrial Complex	PSR
15	12-9-05	Pioneer Square Ind. Park Plat C Am'd & Ext'd	PSR
16	8-11-08	Change S.L. County Surveyor, Reid J. Demman	MSK

SEC. 16 T1S-R1W AREA REFERENCE PLAT

PREPARED BY THE OFFICE OF
THE SALT LAKE COUNTY SURVEYOR

COMPILED BY
REID J. DEMMAN
SALT LAKE COUNTY SURVEYOR



SCALE 1" = 300'

Date Converted - 06/04/92

SALT LAKE COUNTY
GEOGRAPHIC INFORMATION SYSTEM
©1992

16-T1S-R1W

16-T1S-R1W