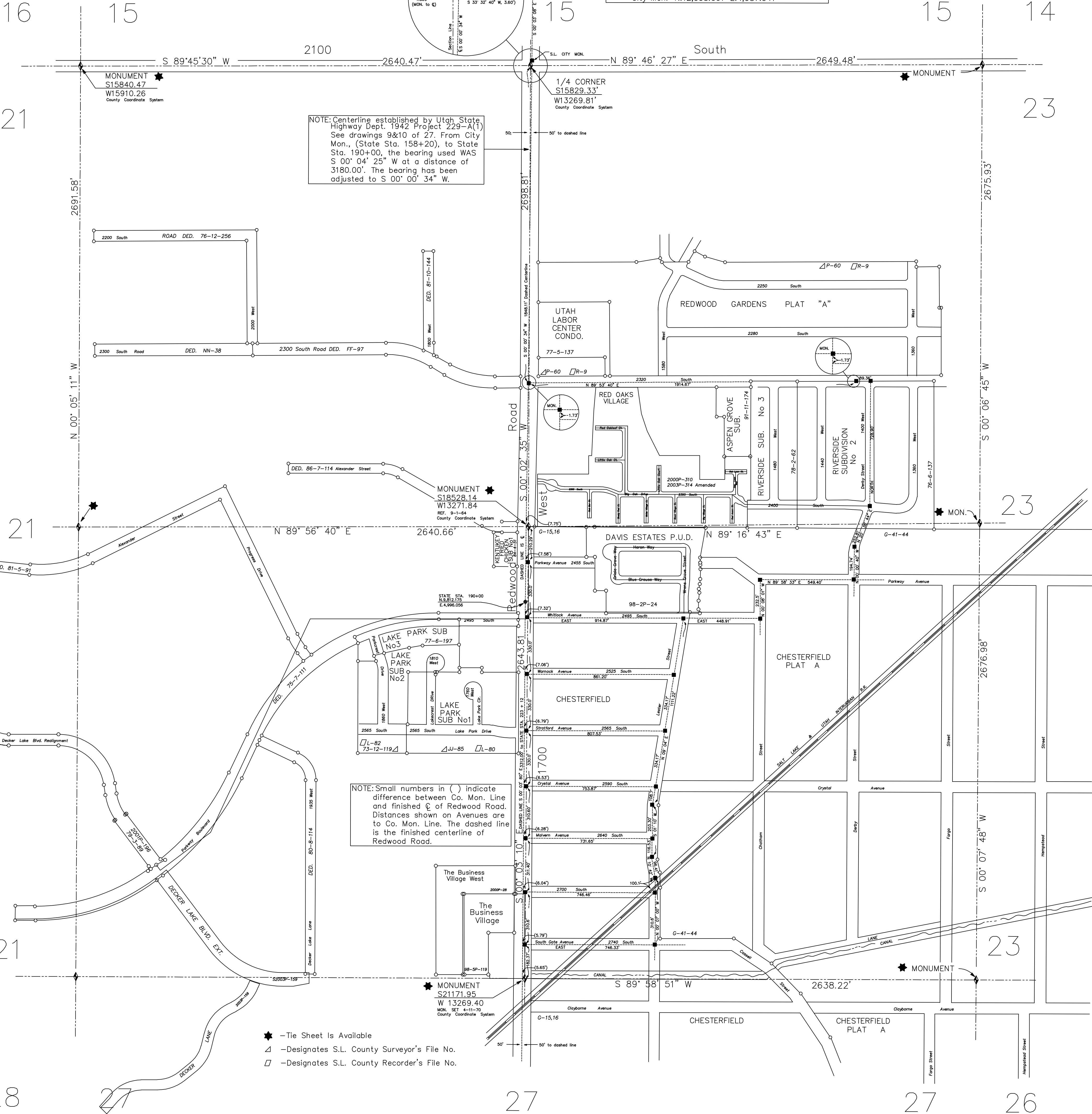


See Salt Lake City Atlas Plat No 5b
 NOTE: Coordinate Basis Center Section 27, T1S-R1W =
 N.5000 E.5000
 1/4 Corner=N.12,992.062 E.4,985.958
 City Mon.=N.12,995.067 E.4,987.941

NOTE: Centerline established by Utah State Highway Dept. 1942 Project 229-A(1) See drawings 9&10 of 27. From City Mon. (State Sta. 158+20) to State Sta. 190+00, the bearing used WAS S 00° 04' 25" W at a distance of 3180.00'. The bearing has been adjusted to S 00° 00' 34" W.

NOTE: Small numbers in () indicate difference between Co. Mon. Line and finished C of Redwood Road. Distances shown on Avenues are to Co. Mon. Line. The dashed line is the finished centerline of Redwood Road.

- ★ -Tie Sheet Is Available
- Δ -Designates S.L. County Surveyor's File No.
- -Designates S.L. County Recorder's File No.



SEC. 22
 T1S - R1W
 AREA REFERENCE PLAT

PREPARED BY THE OFFICE OF
 THE SALT LAKE COUNTY SURVEYOR

REID J. DEMMAN
 SALT LAKE COUNTY SURVEYOR

Date Converted - 06/04/92

NOTICE

THE VALUES SHOWN HEREON REFERENCE THIS PLAT ONLY. ADJACENT AREA REFERENCE PLATS MAY SHOW DIFFERENT VALUES FOR IDENTICAL LINES.
 A.R.P. VALUES HAVE BEEN GATHERED OVER A NUMBER OF YEARS, USING A VARIETY OF EQUIPMENT WITH VARIOUS DEGREES OF ACCURACY. ALL INFORMATION SHOWN IS FOR REFERENCE ONLY AND SHOULD BE FIELD VERIFIED. COPIES OF FIELD TRAVERSES ARE AVAILABLE FOR MOST SECTIONS.
 STATE PLANE COORDINATES ARE ALSO AVAILABLE FOR SOME SECTIONS.
 PLEASE CHECK WITH STAFF.



SCALE 1" = 300'

| REVISIONS | | | |
|-----------|----------|---|---------|
| NO. | DATE | DESCRIPTION OF REVISION | INITIAL |
| 1 | 3-31-95 | Best Fit | SW |
| 2 | 12-29-97 | Standardize Layer Colors | PSB |
| 3 | 12-29-97 | Change S.L. Co. Surveyor-Vaughn E. Butler | PSB |
| 4 | 2-04-98 | Davis Estates P.U.D. Sub. | MDS |
| 5 | 5-22-98 | The Business Village | MDS |
| 6 | 2-15-00 | The Business Village West | PSB |
| 7 | 1-24-01 | Red Oaks Park | PSB |
| 8 | 12-12-01 | Decker Lake Boulevard Realignment | PSB |
| 9 | 8-6-03 | Decker Lake Boulevard Ext. Dedication | PSB |
| 10 | 12-16-03 | Red Oaks Village Amending Red Oaks Park | PSB |
| 11 | 11-16-07 | Change S.L. Co. Surveyor-Reid J. Demman | MSK |
| | | | |
| | | | |
| | | | |
| | | | |
| | | | |
| | | | |
| | | | |
| | | | |
| | | | |
| | | | |
| | | | |
| | | | |
| | | | |
| | | | |
| | | | |
| | | | |
| | | | |
| | | | |
| | | | |
| | | | |
| | | | |