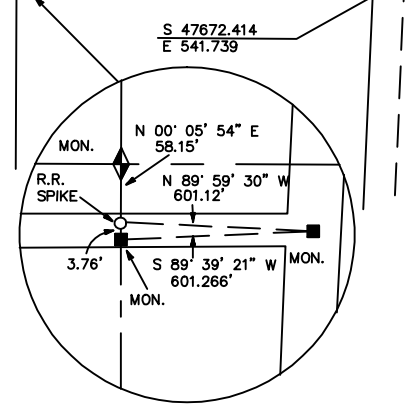


13

17

19

- REFERENCES
- WORKSHEET NO. 20
  - OWNERSHIP PLATS
  - SUBDIVISION PLATS
  - FIELD BOOK - 62,121,143,144
  - ★ - Tie Sheet Is Available
  - △ - Designates S.L. County Surveyor's File No.
  - ◇ - Designates S.L. County Recorder's File No.



REVISIONS			
NO.	DATE	DESCRIPTION OF REVISION	INITIAL
1	9-23-93	Update 1992-93 Subdivisions	LJP
2	1-05-94	Shady Farm Sub.	LJP
3	1-23-95	Extension of Murray City Limits	LJP
4	3-10-95	Rubber Sheeted	SW
5	9-25-95	Add Notice	ALM
6	9-25-95	Fashion Square Sub.	ALM
7	12-1-95	Change S.L. County Surveyor, Vaughn E. Butler	ALM
8	12-1-95	Standardize Layer Colors	ALM
9	12-1-95	Maynes Minor Subdivision	ALM
10	7-29-97	5900 South Wagstaff Acres	PSB
11	10-28-97	5900 South Wagstaff Acres-Am'd	PSB
12	5-22-98	Am'd. and Ext. Murray Burton Acres Subdivision	PSB
13	7-15-98	Brighthurst Minor Subdivision	MDS
14	12-23-98	Bridlewalk Subdivision 2nd Amended	PSB
15	5-12-99	Murray Burton Acres Amended	PSB
16	8-30-99	Eyle Estates	PSB
17	01-05-00	IHC Cottonwood Subdivision	PSB
18	4-21-00	5900 South Wagstaff Acres Am'd	PSB
19	3-12-02	Connie Evans Subdivision	PSB
20	03-7-06	Cox Minor Subdivision	PSB
21	03-7-06	Cottonwood Medical Plaza Condominiums	PSB
22	8-11-08	Change S.L. County Surveyor, Reid J. Demman	MSK

# SEC. 18 T2S-R1E AREA REFERENCE PLAT

**NOTICE**

THE VALUES SHOWN HEREON REFERENCE THIS PLAT ONLY. ADJACENT AREA REFERENCE PLATS MAY SHOW DIFFERENT VALUES FOR IDENTICAL LINES. A.R.P. VALUES HAVE BEEN GATHERED OVER A NUMBER OF YEARS, USING A VARIETY OF EQUIPMENT WITH VARIOUS DEGREES OF ACCURACY. ALL INFORMATION SHOWN IS FOR REFERENCE ONLY AND SHOULD BE FIELD VERIFIED. COPIES OF FIELD TRAVELERS ARE AVAILABLE FOR MOST SECTIONS. STATE PLANE COORDINATES ARE ALSO AVAILABLE FOR SOME SECTIONS. PLEASE CHECK WITH STAFF.

PREPARED BY THE OFFICE OF  
THE SALT LAKE COUNTY SURVEYOR

COMPILED BY  
**REID J. DEMMAN**  
SALT LAKE COUNTY SURVEYOR



SCALE 1" = 300'

SALT LAKE COUNTY  
GEOGRAPHIC INFORMATION SYSTEM  
©1992

18-T2S-R1E

Date Converted - 10/01/92

18-T2S-R1E