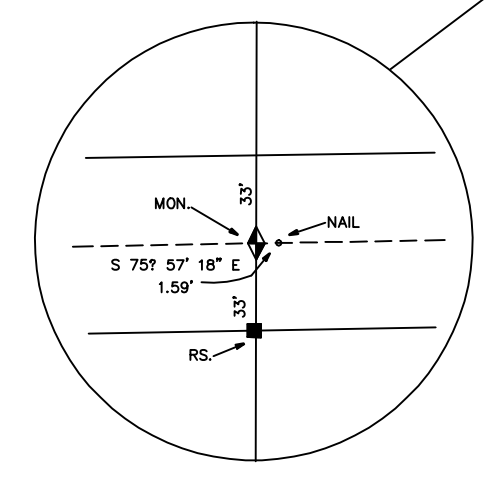


- ★ - Tie Sheet Is Available
- △ - Designates S.L. County Surveyor's File No.
- - Designates S.L. County Recorder's File No.



REVISIONS			
NO.	DATE	DESCRIPTION OF REVISION	INITIAL
1	3-15-95	Rubber Sheeted	SW
2	12-13-96	Changed S.L.Co. Surveyor - Vaughn E. Butler	BJB
3	12-13-96	Montana Ranchos No. 4	BJB
4	8-5-98	Wright/Bowers Annexation to Sandy City	LJP
5	8-5-98	Added Notice	LJP
6	3-2-99	Peterson Subdivision	PSB
7	7-30-02	Canyon Ridge Office Park	PSB
8	8-7-03	Cameo Park No. 6 Subdivision	PSB
9	12-29-03	Canyon Ridge Office Park Phase 2	PSB
10	11-20-07	Changed S.L.Co. Surveyor - Reid J. Demman	MSK

SEC. 04
T3S-R1E

NOTICE

THE VALUES SHOWN HEREON REFERENCE THIS PLAT ONLY. ADJACENT AREA REFERENCE PLATS MAY SHOW DIFFERENT VALUES FOR IDENTICAL LINES. A.R.P. VALUES HAVE BEEN GATHERED OVER A NUMBER OF YEARS, USING A VARIETY OF EQUIPMENT WITH VARYING DEGREES OF ACCURACY. ALL INFORMATION SHOWN IS FOR REFERENCE ONLY AND SHOULD BE FIELD VERIFIED. COPIES OF FIELD TRAVERSES ARE AVAILABLE FOR MOST SECTIONS. STATE PLANE COORDINATES ARE ALSO AVAILABLE FOR SOME SECTIONS. PLEASE CHECK WITH STAFF.

AREA REFERENCE PLAT

PREPARED BY THE OFFICE OF
THE SALT LAKE COUNTY SURVEYOR



SCALE 1" = 300'

REID J. DEMMAN
SALT LAKE COUNTY SURVEYOR

SALT LAKE COUNTY
GEOGRAPHIC INFORMATION SYSTEM
©1992