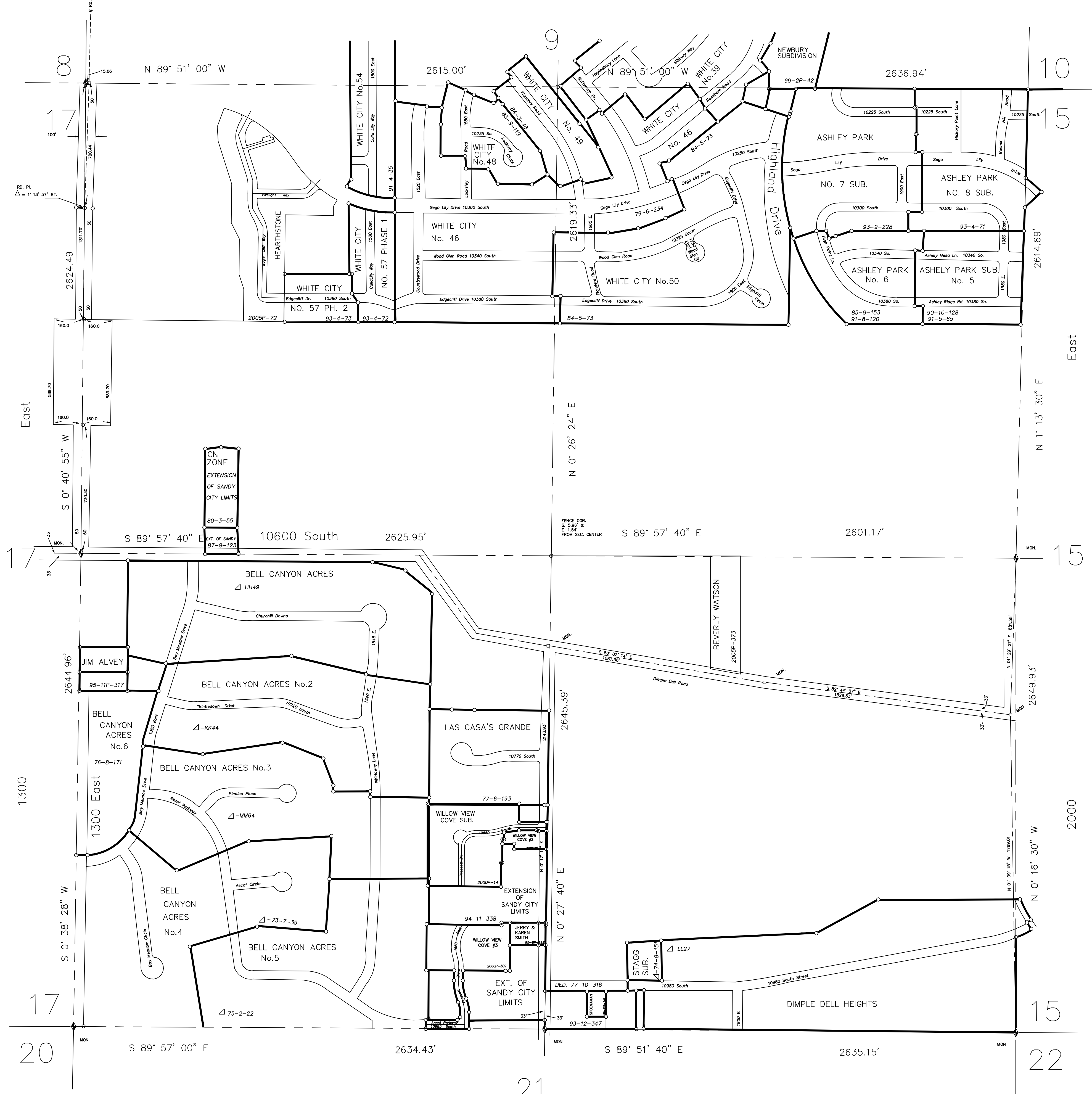


10200

South



- ★ - Tie Sheet Is Available
- △ - Designates S.L. County Surveyor's File No.
- - Designates S.L. County Recorder's File No.

**NOTICE**

THE VALUES SHOWN HEREON REFERENCE THIS PLAT ONLY. ADJACENT AREA REFERENCE PLATS MAY SHOW DIFFERENT VALUES FOR IDENTICAL LINES.

A.R.P. VALUES HAVE BEEN GATHERED OVER A NUMBER OF YEARS, USING A VARIETY OF EQUIPMENT WITH VARIOUS DEGREES OF ACCURACY. ALL INFORMATION SHOWN IS FOR REFERENCE ONLY AND SHOULD BE FIELD VERIFIED. COPIES OF FIELD TRAVERSES ARE AVAILABLE FOR MOST SECTIONS.

STATE PLANE COORDINATES ARE ALSO AVAILABLE FOR SOME SECTIONS.

PLEASE CHECK WITH STAFF.

REVISIONS			
NO.	DATE	DESCRIPTION OF REVISION	INITIAL
1	9-17-93	Update 1993 Subdivisions	LJP
2	1-06-94	Sandy City Annex. 93-12-347	LJP
3	12-9-94	Sandy City Annex. 94-11-338	LJP
4	3-17-95	Rubber Sheeted	SW
5	6-16-95	Added Notice	LJP
6	6-16-95	Relocated Ashley Park No. 5 & 6 Subs.	LJP
7	9-25-95	Jerry & Karen Smith New Parcel	ALM
8	1-8-96	Change S.L. County Surveyor, Vaughn E. Butler	ALM
9	1-8-96	Standardize Layer Colors	ALM
10	1-8-96	Jim Alvey	ALM
11	3-1-99	Newbury Subdivision	PSB
12	12-29-99	Spoenaman Subdivision	PSB
13	2-7-00	Willow View Cove Subdivision	PSB
14	9-14-00	Willow View Cove Subdivision #2	PSB
15	12-6-00	Willow View Cove Subdivision #3	PSB
16	5-13-05	Hearthstone Subdivision	PSB
17	4-5-06	Beverly Watson Subdivision	PSR
18	8-11-08	Change S.L. County Surveyor, Reid J. Demman	MSK

SEC. 16  
T3S-R1E  
AREA REFERENCE PLAT

PREPARED BY THE OFFICE OF  
THE SALT LAKE COUNTY SURVEYOR

COMPILED BY  
**REID J. DEMMAN**  
SALT LAKE COUNTY SURVEYOR

SALT LAKE COUNTY  
GEOGRAPHIC INFORMATION SYSTEM  
©1992



SCALE 1" = 300'