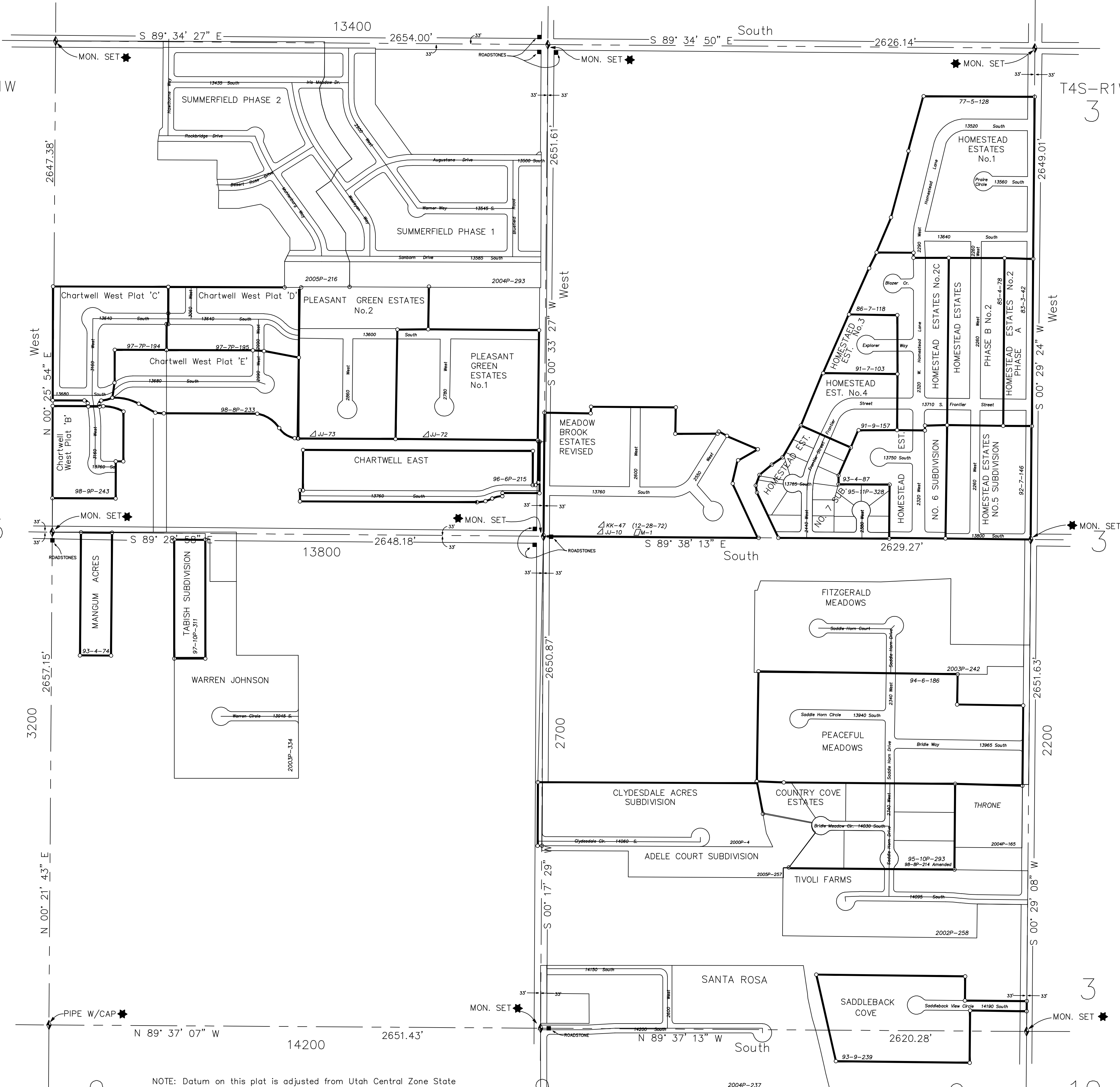


T3S-R1W 32 T3S-R1W 33 T3S-R1W 33 T3S-R1W 33 T3S-R1W 34

T4S-R1W 5 T4S-R1W 3



NOTE: Datum on this plat is adjusted from Utah Central Zone State Plane Coordinate computations and may not agree with other sectional information on file in this office.

- ★ -Tie Sheet Is Available
- △ -Designates S.L. County Surveyor's File No.
- ◇ -Designates S.L. County Recorder's File No.

REVISIONS			
NO.	DATE	DESCRIPTION OF REVISION	INITIAL
1	9-24-93	Update 1992-93 Subdivisions	LJP
2	10-25-93	Saddleback Cove Sub.	LJP
3	7-7-94	Peaceful Meadows	LJP
4	3-20-95	Rubber Sheeted	SW
5	12-20-95	Added Notice	ALM
6	12-20-95	Change S.L. County Surveyor, Vaughn E. Butler	ALM
7	12-20-95	Country Cove Estates	ALM
8	1-11-96	Homestead Estates #7 Subdivision	ALM
9	8-25-97	Chartwell West Plat C	PSB
10	8-25-97	Chartwell West Plat D	PSB
11	10-30-97	Standardize Layer Colors	PSB
12	10-30-97	Tabish Subdivision	PSB
13	11-18-97	Chartwell East Subdivision	PSB
14	8-20-98	Country Cove Estates Lot 6 Amended	PPM
15	1-26-98	Chartwell West Plat F	PSB
16	2-9-00	Clydesdale Acres	PSB
17	11-20-02	Tivoli Farms Subdivision	PSB
18	9-30-03	Fitzgerald Meadows Subdivision	PSB
19	12-18-03	Warren Johnson Subdivision	PSB
20	8-19-04	Throne Subdivision	PSB
21	10-4-04	Santa Rosa Subdivision	PSB
22	11-24-04	Summerfield Phase 1 Subdivision	PSB
23	10-13-05	Summerfield Phase 2 Subdivision	PSB
24	11-21-05	Adele Court Subdivision	PSB
25	8-11-08	Change S.L. County Surveyor, Reid J. Demman	MSK

SEC. 04  
T4S-R1W

AREA REFERENCE PLAT

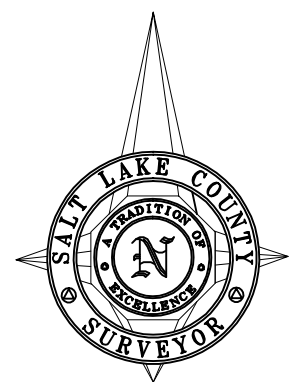
PREPARED BY THE OFFICE OF  
THE SALT LAKE COUNTY SURVEYOR

COMPILED BY

REID J. DEMMAN

SALT LAKE COUNTY SURVEYOR

NOTICE  
THE VALUES SHOWN HEREON REFERENCE THIS PLAT ONLY. ADJACENT AREA REFERENCE PLATS MAY SHOW DIFFERENT VALUES FOR IDENTICAL LINES. A.R.P. VALUES HAVE BEEN GATHERED OVER A NUMBER OF YEARS, USING A VARIETY OF EQUIPMENT WITH VARYING DEGREES OF ACCURACY. ALL INFORMATION SHOWN IS FOR REFERENCE ONLY AND SHOULD BE FIELD VERIFIED. COPIES OF FIELD TRAVERSES ARE AVAILABLE FOR MOST SECTIONS. STATE PLANE COORDINATES ARE ALSO AVAILABLE FOR SOME SECTIONS. PLEASE CHECK WITH STAFF.



SCALE 1" = 300'

Date Converted - 09/03/92

SALT LAKE COUNTY  
GEOGRAPHIC INFORMATION SYSTEM  
© 1992

04-T4S-R1W

04-T4S-R1W