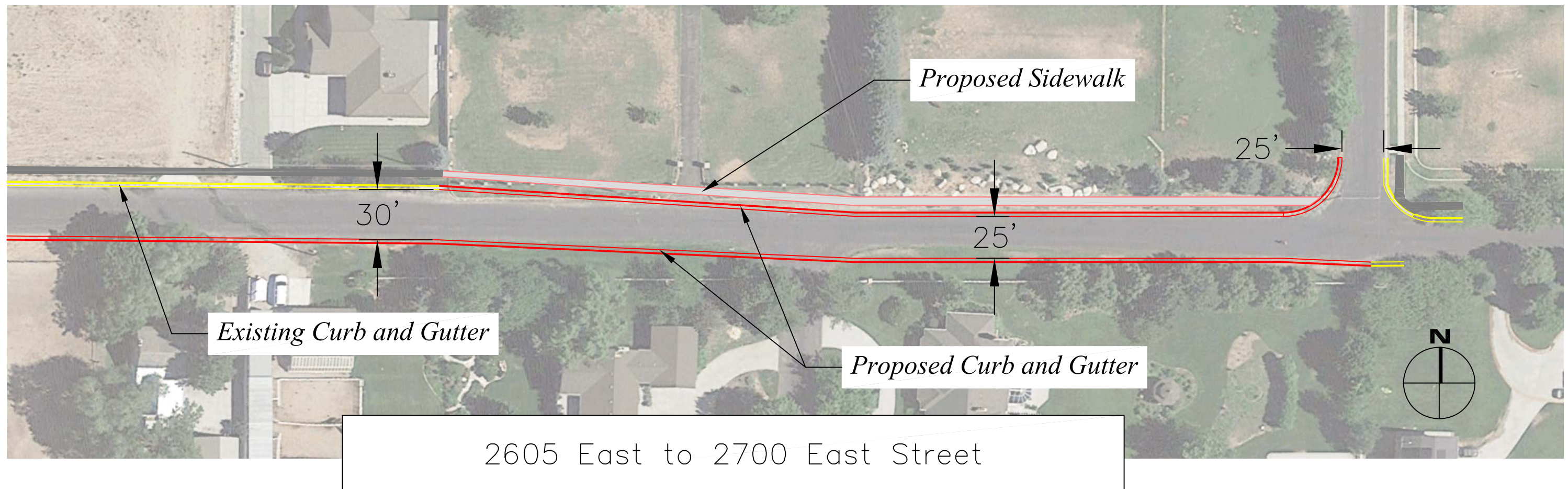
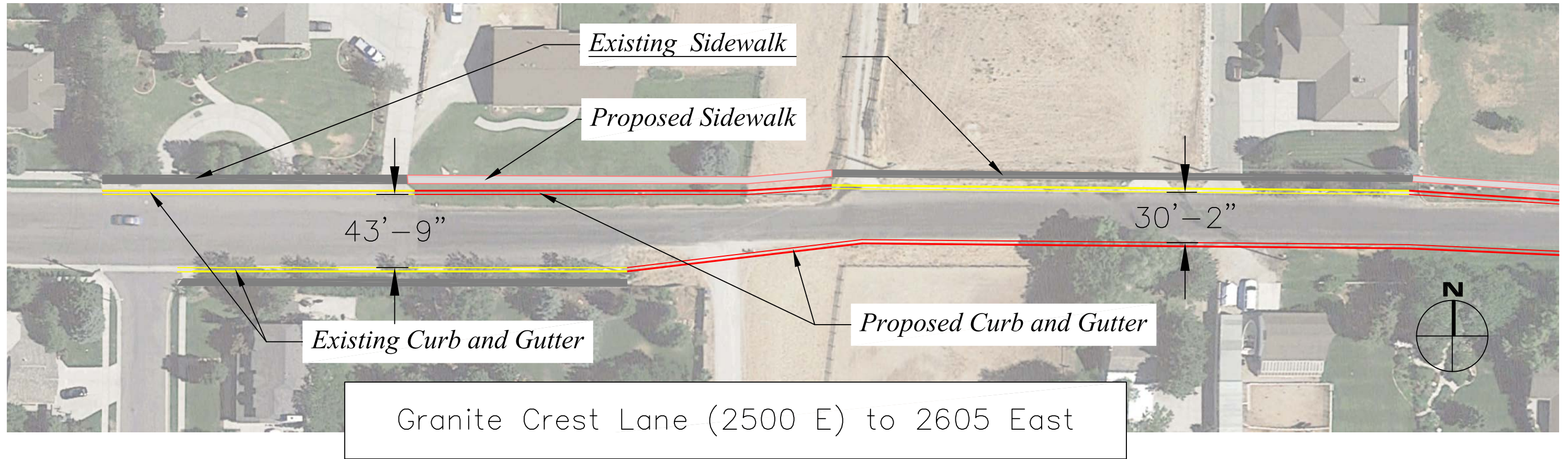
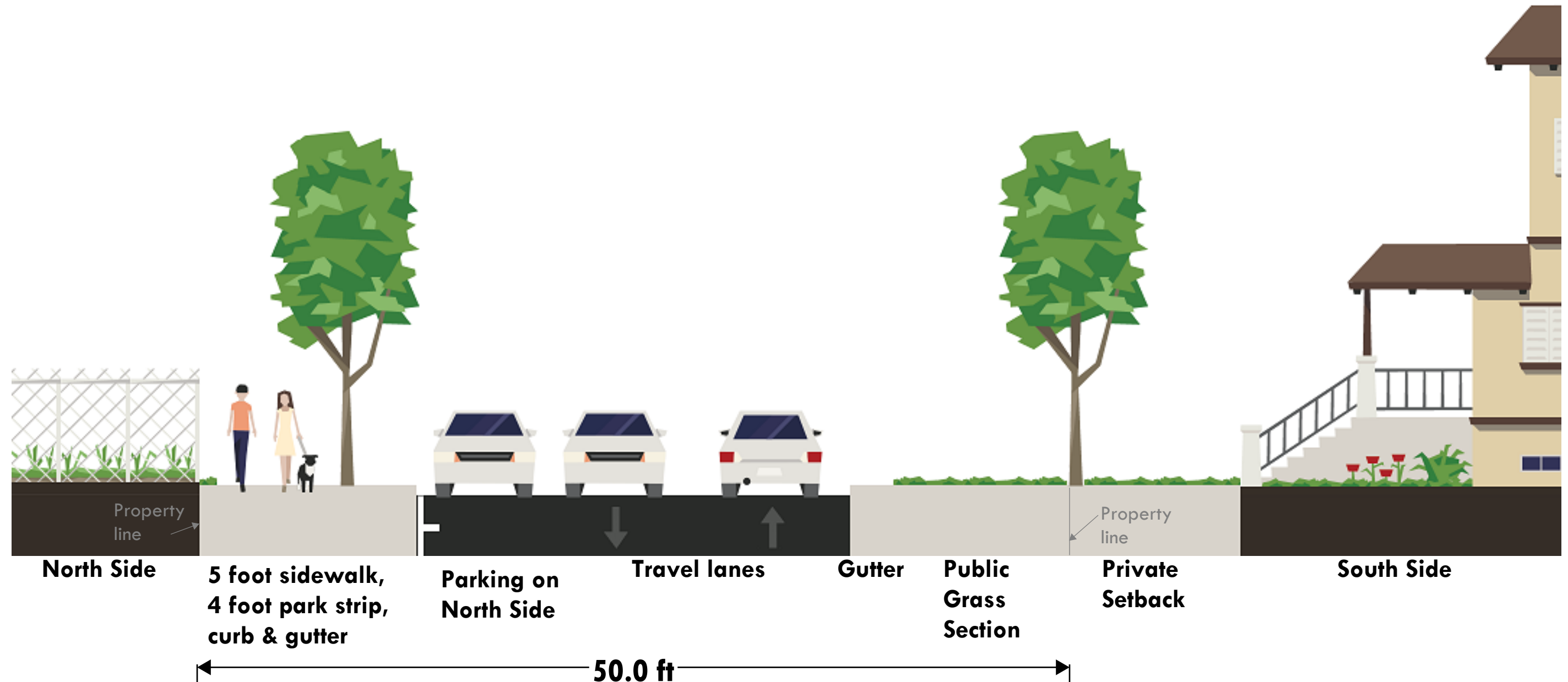


10000 South Street Proposed Pedestrian Safety Improvements



10000 South Street Proposed Cross Section



North Side - Sidewalk with park strip and standard curb and gutter

South Side - Rolled or mountable gutter to accommodate horses, with 8 to 10 foot grass area

Transition from 66 foot right-of-way to 50 foot right-of-way to minimize property impacts and acquisition (see plan view)

County will coordinate with Sandy City and Metro Water District to connect to existing street improvements to the west

Parking on north side only to prevent parking on grass on south side and keep street open for emergency access