

Save Our Canyons

Protecting Our Watershed Through Activism

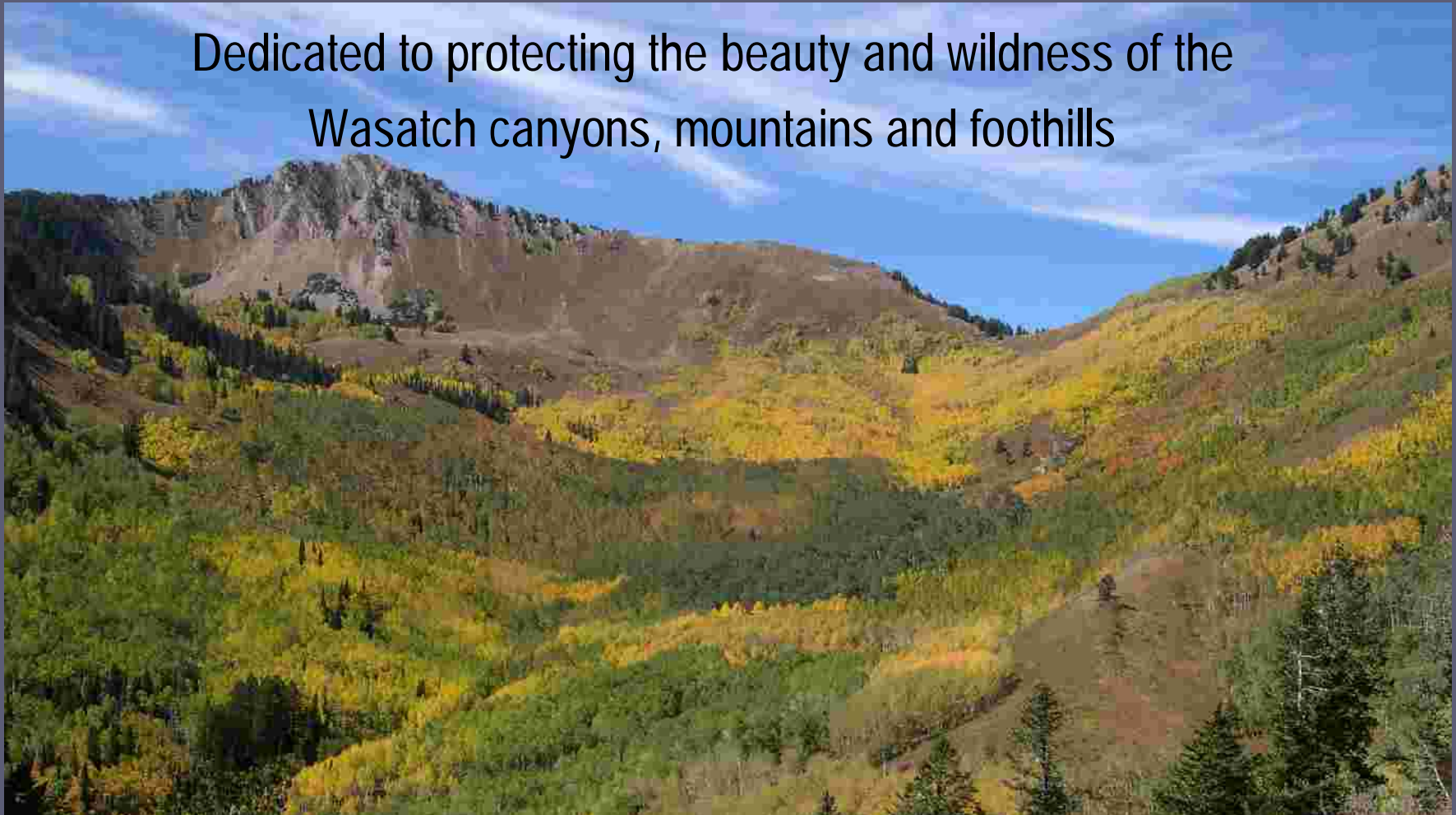
White Pine, Little Cottonwood Canyon



Save Our Canyons

Mission:

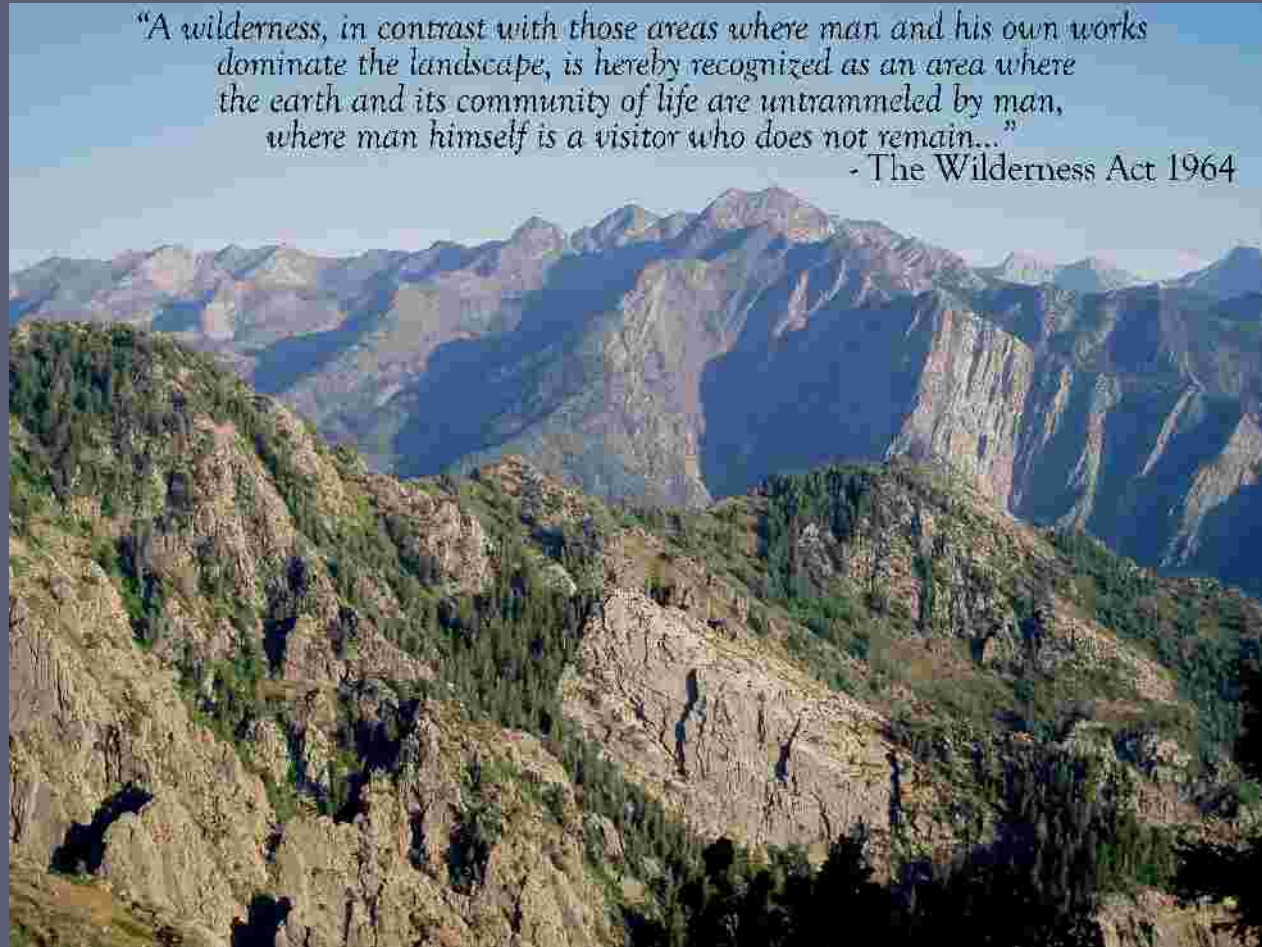
Dedicated to protecting the beauty and wildness of the Wasatch canyons, mountains and foothills



Citizen Involvement

- Wilderness Act - 1964

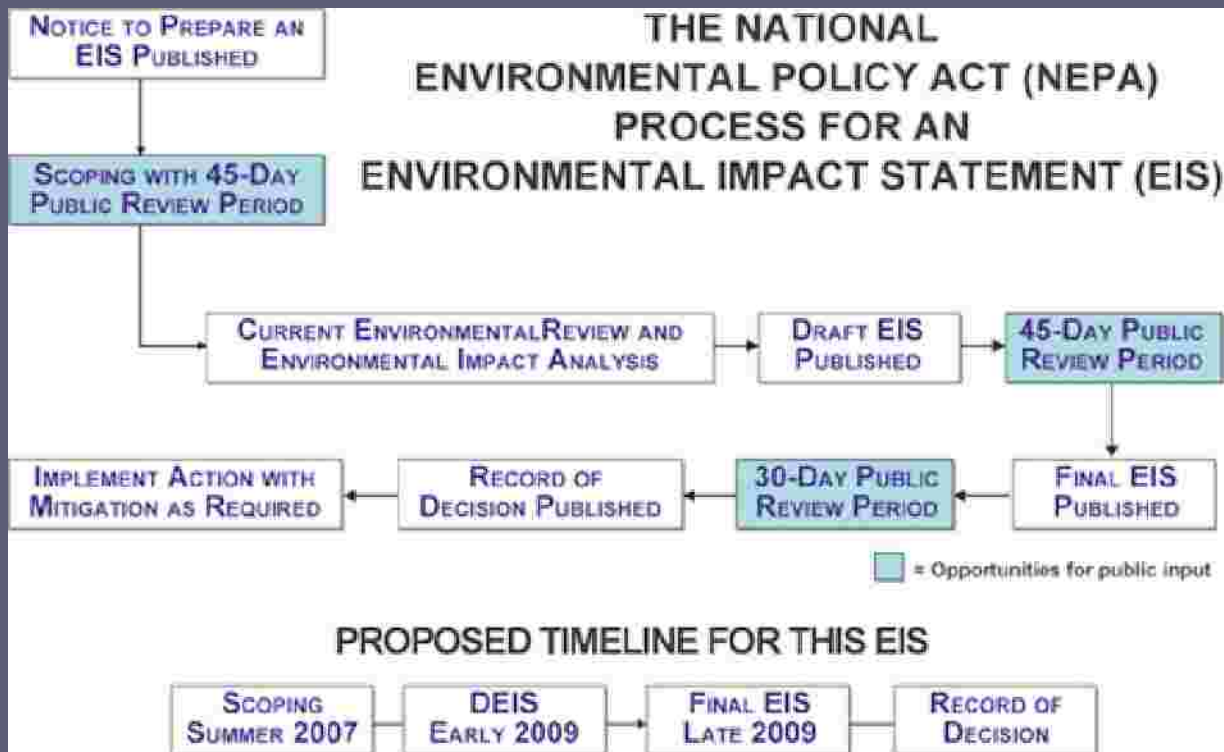
"A wilderness, in contrast with those areas where man and his own works dominate the landscape, is hereby recognized as an area where the earth and its community of life are untrammeled by man, where man himself is a visitor who does not remain..."
- The Wilderness Act 1964



Save Our Canyons

Citizen Involvement

- National Environmental Policy Act (NEPA) - 1970
 - Forced Agencies to consider Environmental Impacts
 - Identify Alternatives to proposed action
 - Complete and Environmental Assessment (EA) or an Environmental Impact Statement (EIS)
 - Gives citizens ability to provide comments



Save Our Canyons

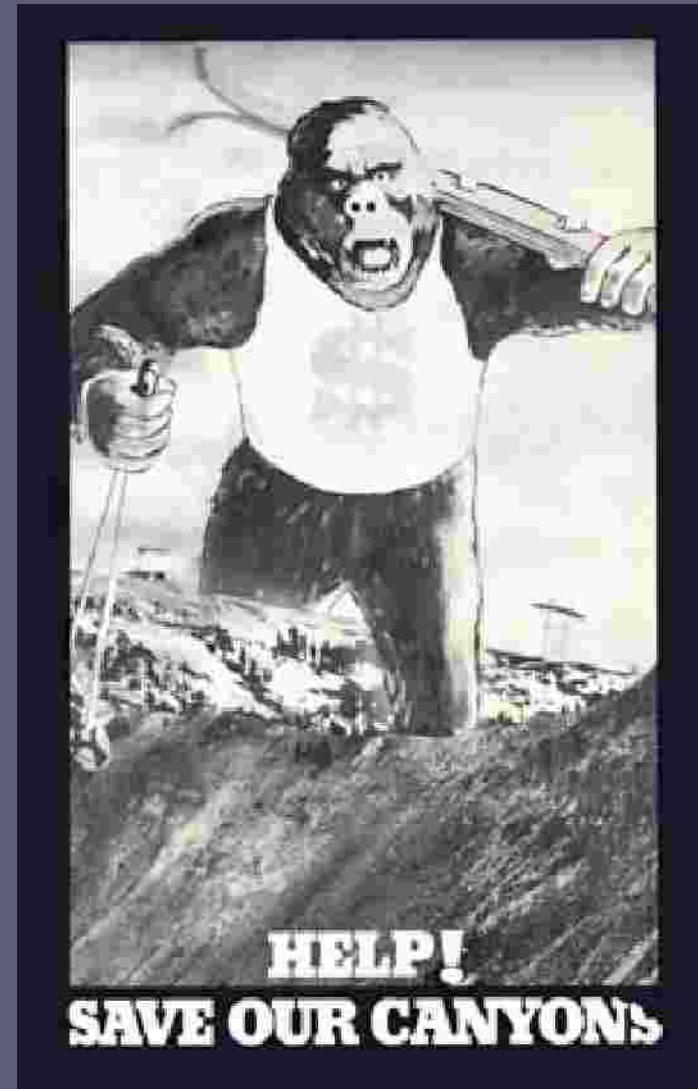
Citizen Involvement



- Salt Lake County Wasatch Canyons Master Plan - 1989
- Salt Lake City Watershed Management Plan - 1999
- Forest Service Plans
- Ski Area Master Plans

Save Our Canyons

History



Save Our Canyons

Lone Peak Wilderness -1978



Save Our Canyons

Twin Peaks & Mount Olympus Wilderness -1984



Save Our Canyons

Other Organizational Successes

- Influence over SL Co Canyons Master Plan - 1989
- RS 2477 Claims in Salt Lake Co
- Preserved critical tracts of Watershed Lands
 - Forest Glen, Killyons Canyon, Willow Heights, Grandeur Peak



Save Our Canyons

Current Projects

- Monitoring Foothills and Canyons Developments & Ordinances
- Identifying private lands for Watershed Conservation
- Ski Area projects
- Canyon Transportation
- Canyons Master Plan - UPDATE
- Working towards protecting the Wasatch for the use of Future Generations and health of Salt Lake Valley Residents



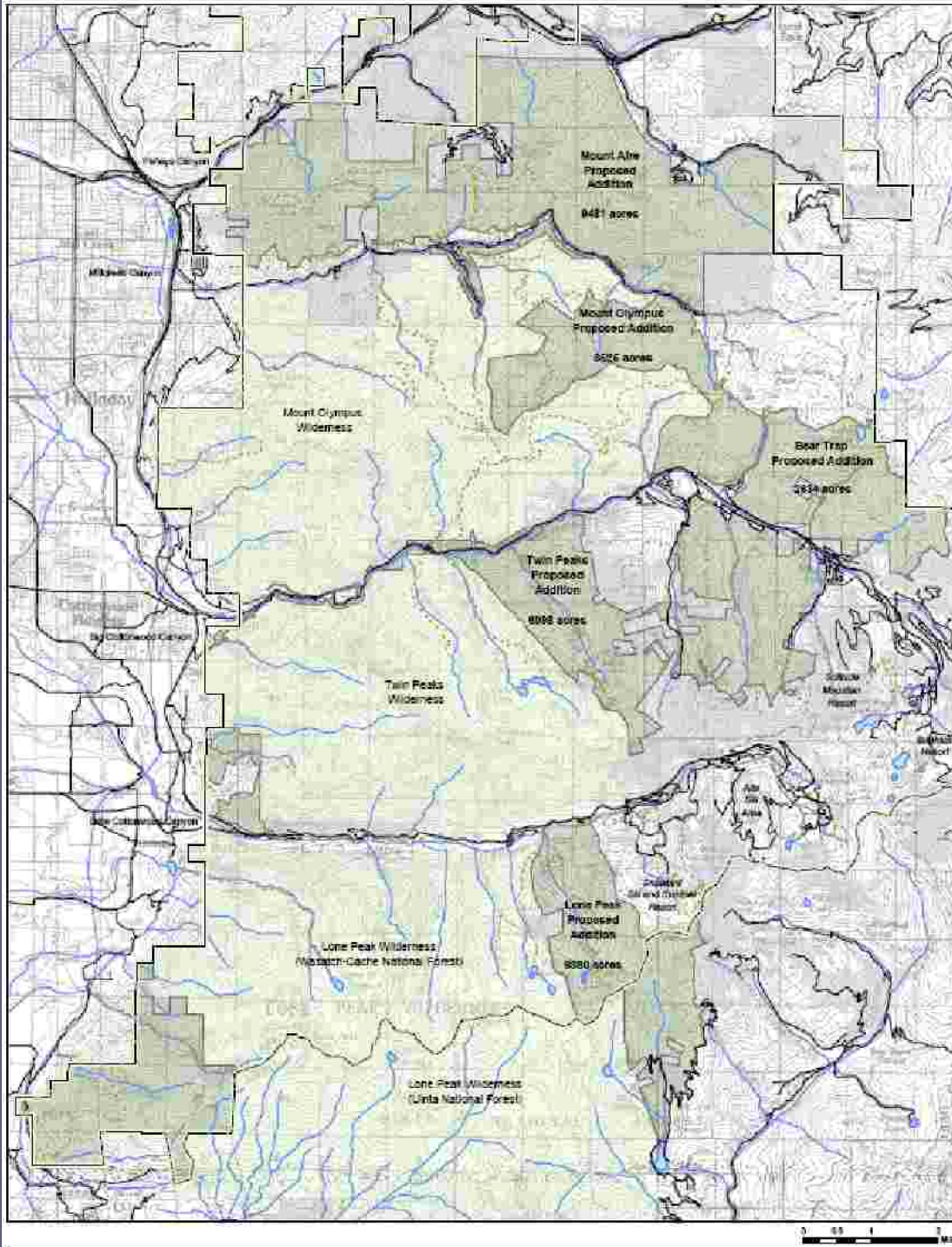
Save Our Canyons

Current Projects

- Wasatch Wilderness
 - 28,000 acres in Central Wasatch
 - Encompass entire drainages
 - Protect critical watershed and wildlife areas
 - Inventoried Roadless Areas
 - Broad Support!



Save Our Canyons



Mount Aire Addition
9,481 acres

Mount Olympus Addition
3,526 acres

Bear Trap Addition
2,634 acres

Twin Peaks Addition
6,098 acres

Lone Peak Addition
6,380 acres

Save Our Canyons

This...



Save Our Canyons

Not this...



Save Our Canyons

Save Our Canyons

More info

www.saveourcanyons.org

(801) 363 - 7283

info@saveourcanyons.org

